



DAILY BULLETIN

Las Vegas, Nevada

Vol. 75, No.9

Tuesday, November 27, 2001

Editors: Henry Francis and Paul Linxwiler

The rise of Rose – the story of a champ



“God bless America! We were proud to be Americans in Paris, and we were proud to be representing the United States in this time of adversity.” That’s what Rose Meltzer, the first woman ever to win the Bermuda Bowl, said of her world championship experience in Paris.

“The world bridge community greeted all the Americans with open arms. Surges of patriotism by citizens of many countries rose everywhere. The French people were most welcoming and friendly. The members of the Indonesian team came up to us individually and hugged every one of us. I even made a new friend – Kiran from India. We discovered that we live about half a mile from each other when she’s in the United States, so we’re going to get together and play.”

Rose still hasn’t got over the joy of winning the Bermuda Bowl, but she found the wonderful spirit that pervaded the Parisian air even more thrilling. “There was such a feeling of togetherness. We were all one.”

She had only the highest praise for Jose Damiani, president of the World Bridge Federation. “My team was worried about going to Bali. We were very happy

when we finally learned we didn’t have to make a decision about Bali. We heard that the tournament might be rescheduled in either Lausanne, Switzerland, or Paris right away, or possibly in Australia next February. We were overjoyed when we heard it was on for Paris.

“I don’t think it was possible to do any better than Jose did, considering all the problems. Everyone was happy and there were no complaints, even though we were faced with long taxi rides during the round-robin. Long taxi rides? Who cares! It was worth it!”

The semifinals and final of the Bermuda Bowl were the ultimate in excitement and suspense for her whole team.

“When we beat Poland, I couldn’t have been more pleased. I look just as good in silver as I do in gold. But that didn’t stop me from wanting the gold. We were down a lot in the final against Norway, so I said to Kyle, ‘Let’s get back as much as we can.’ And we got a lot back – the margin dropped from

Continued on page 4

Multinational Coleman on top in Reisinger

The American-Polish-Russian sextet of Jack Coleman, Bob Crossley, Cezary Balicki, Adam Zmudzinski, Aleksander Petrunin and Andrew Gromov topped the list of semifinalists in yesterday’s Reisinger Board-a-Match action. Balicki, Zmudzinski, Petrunin and Gromov are the defending Vanderbilt champions. Coleman finished with 35.30.

In second was the team of Roy Welland, Bjorn Fallenius, Brad Moss, Fred Gitelman, Steve Garner and Howard Weinstein with a score of 33.69.

In third with 33.30 is the Turkish squad of Ata Aydin, Gokhan Yilmaz, Nafiz Zorlu and Salvador Assael. Zorlu and Assael won the Edgar Kaplan Blue Ribbon Pairs earlier this week.

Of the 28 teams that played in yesterday’s semifinal round, 14 made the cut to today’s two-session final.

The lowest qualifying score was 29.40.

Today’s Reisinger finals will be on vugraph from start to finish. Chris Compton has lined up a fine cast of commentators. He also plans to have interesting interviews and other special bridge topics. He is attempting to set up a second screen that will enable spectators to keep track of the scores at all times.

Coren squad leads NA Swiss qualifiers

The squad of Richard Coren, Billy Eisenberg, Larry Cohen (Las Vegas), and Drew Casen finished at the top of the 64-team field in the North American Swiss Teams after yesterday’s semifinal round.

Casen scored 117.35 (including carryover) to finish slightly ahead of the squad of Peggy Kaplan, Curtis Hastings, Dick Bruno, William Wickham, Stanley Katz and Ginny Schuett who posted a tally of 116.30.

In third with 115.56 is the team of Lynn Baker, Kerri Sanborn, Karen McCallum and Matt Granovetter.

The lowest qualifying score was 89.07.

The top 30 teams from the semifinal round will compete in today’s two-session final round.

Corinne Kirkham tops 15,000 masterpoints



Corinne Kirkham of San Bernardino CA has crossed the 15,000-masterpoint milestone. Corinne, the wife of 2001 ACBL President Jim Kirkham, has won three NABC titles: the Women’s Pairs (1994), the Senior Swiss Teams (1999) and the Silver Ribbon Pairs playing with Jim (1999).

Kirkham has also placed second in the IMP Pairs (1988) and the Silver Ribbon Pairs (1993).

A graduate of the University of Maryland, Kirkham is a former computer programmer and systems analyst. She once placed second in a regional event with her 11-year-old daughter Adair Gellman. Gellman once held the record for youngest Life Master.

Kirkham is an ACBL Grand Life Master.

Tournament chairs: “Thanks to everyone!”

The tournament chairmen for the 2001 Las Vegas NABC, Mary Ellen O’Brien and Deborah Bronaugh, are thanking everyone who participated in the event.

“Las Vegas 2001 was the largest Fall NABC ever, and we want to thank all the players for making the tournament such a success,” said Bronaugh.

O’Brien added, “We also want to applaud our staff who did such a good job: Helen Allen (Volunteers); Jenny Pinto and Edie Morgan (Registration); Jill Stokke (Intermediate/Newcomer Pairs); Charles Comeau and Howard Tuft (Information); Gwen Cline (Section Tops); Della Willis (Partnership); and Nancy Strause and Lois Mason Carter (Post Entertainment).

“I also want to thank one of the most tireless workers on the whole staff, my husband Maurice, who was Candy Distributor and Coupon Hand-Outer.”

O’Brien and Bronaugh also thanked the ACBL staff — tournament directors and headquarters personnel — for all their hard work.

Player of Year leaders

The Player of the Year award is earned by the player who wins the most Platinum Points (from NABC+ events) in a calendar year.

The 2001 Player of the Year contest is drawing to a close, with only the points from the Reisinger Board-a-Match Teams and the North American Swiss Teams yet to be included.

The leaders in the 2001 POY race as of Saturday evening are as follows (this list is not official):

| | | |
|--------|-------------------------------|--------|
| 1. | Ralph Katz, Hinsdale IL | 680.97 |
| 2-3. | Rose Meltzer, Los Gatos CA | 644.36 |
| 2-3. | Peter Weichsel, Los Gatos CA | 644.36 |
| 4. | Lew Stansby, Castro Valley CA | 617.98 |
| 5. | George Jacobs, Burr Ridge IL | 615.24 |
| 6. | Alfredo Versace, Rome Italy | 611.41 |
| 7. | Paul Soloway, Mill Creek VA | 541.74 |
| 8. | Norberto Bocchi, Milano Italy | 541.39 |
| 9. | Giorgio Duboin, Torino Italy | 536.74 |
| 10. | Lorenzo Lauria, Rome Italy | 530.00 |
| 11. | Chip Martel, Davis CA | 529.65 |
| 12. | Eric Rodwell, Clearwater FL | 528.71 |
| 13. | Jeff Meckstroth, Tampa FL | 528.57 |
| 14. | Jill Meyers, Santa Monica | 498.44 |
| 15. | Peter Boyd, Silver Spring MD | 494.66 |
| 16. | Kyle Larsen, San Francisco CA | 484.68 |
| 17. | Bob Hamman, Dallas TX | 470.60 |
| 18-19. | Richard Freeman, Atlanta GA | 469.73 |
| 18-19. | Nick Nickell, New York NY | 469.73 |
| 20. | Zia Mahmood, New York NY | 457.29 |

Montreal to host World Championships

Make your plans now to attend the World Championships in Montreal, August 16-31, 2002. Montreal offers a truly cosmopolitan setting — European charm in a North American venue. See the Sunday and Monday issues, page 4, for schedule, hotel and travel information.

In addition to the unique site, the World Championships (held concurrently with the Can-Am Regional), will offer both ACBL masterpoints and WBF masterpoints for the same events. Two for the price of one!

With the Canadian dollar currently at \$1.60 compared to the U.S. dollar, Montreal — already known for its travel bargains — is even more attractive for visitors.

Don’t miss this chance to play in a world-class event in a world-class city.

SPECIAL EVENTS

Tuesday, November 27, 2001

- 9:00 a.m. - Noon Club Directors' Refresher Course. Ballroom D. This is a three-session program dealing with the public relations aspect of running a successful club. The fee is \$20 if preregistered; \$25 at the door. (Continues Wednesday.)
- 10:00 a.m. - Noon Education Liaison Workshop. Conference Room 4. Betty Starzec hosts this workshop to find out more about promoting bridge locally.
- Noon - 5:00 p.m. Reisinger finals on vugraph. Pavilion 3 and 4.
- 7:00 - 11:00 p.m. Reisinger finals on vugraph. Pavilion 3 and 4.

Mea culpa revisited

By Barry Rigal

When we played the Shugart team, my opportunity to shine got away from me, though some nice defense had given me the problem.

Dlr: South ♠ A 8 5
 Vul: None ♥ 10 2
 ♦ J 7 4 3
 ♣ Q J 7 2

| | |
|--------------|-------------|
| ♠ 7 3 | ♠ Q 4 2 |
| ♥ Q 8 7 4 | ♥ 6 5 3 |
| ♦ 9 2 | ♦ A K Q 8 6 |
| ♣ A 10 8 6 5 | ♣ K 9 |

♠ K J 10 9 6
 ♥ A K J 9
 ♦ 10 5
 ♣ 4 3

| West | North | East | South |
|-----------|----------|-----------|-------|
| Brogeland | Levitina | Forrester | Rigal |
| Pass | 2♠ | 3♦ | 1♠ |
| All Pass | | | 3♠ |

On the defense of ♦A-♦K and a low diamond, I pitched a club. West, Boye Brogeland of Norway, ruffed and led a low club to Tony Forrester's ♣K and a fourth diamond was ruffed with the ♠J. Now I had to play East for at least three hearts and five diamonds. Is he 1-3-5-4 or 3-1-5-4? I guessed wrong when I played the ♥A-K and ruffed a heart with the ♠8. Then a club ruff and a heart ruff high brought us to this ending:

| | |
|-------|---------|
| ♠ 8 | ♠ Q 4 2 |
| ♥ - | ♥ - |
| ♦ - | ♦ - |
| ♣ Q J | ♣ - |

I led the ♠8 from dummy and finessed, but I had to concede the last trick to East. Had I worked out that Forrester surely would have doubled 2♠ initially, or doubled 3♠ in the passout seat with 1-3-5-4 shape, I would have ruffed the second round of clubs high. Then I could have retained the ♠6 in my hand at the end. Then when I played the ♠8 at the 11th trick, I could leave the lead in dummy for the trump coup.

'Brilliant' dummy play

By Barry Rigal

When John and Ken Kranyak finished third in the Edgar Kaplan Blue Ribbon Pairs, some of it was due to Ken's inspired dummy play. But not all of it was as brilliant as his dummy management here.

Dlr: North ♠ K J 5
 Vul: N-S ♥ K Q 10 8 7 3
 ♦ A J
 ♣ 3 2

| | |
|--------------|--------------|
| ♠ A 8 | ♠ Q 10 9 7 2 |
| ♥ 2 | ♥ A J 9 5 |
| ♦ Q 10 9 6 2 | ♦ 7 5 4 |
| ♣ A Q J 7 4 | ♣ 8 |

♠ 6 4 3
 ♥ 6 4
 ♦ K 8 3
 ♣ K 10 9 6 5

| West | North | East | South |
|------|-------|------|----------|
| | 1♥ | 1♠ | 1NT |
| 2♦ | 2♥ | 2♠ | Pass |
| 3♣ | Pass | 3♦ | All Pass |

Ken received the ♥K lead and took the club finesse. He played the ♣A (pitching a spade) and ruffed a club as North sluffed a heart. Then he ruffed a heart to lead the ♣J. North ruffed with the jack as Ken threw another spade from dummy. North exited with the ♥Q, and South pitched the ♣K as Ken ruffed in hand.

Now came the most impressive play. Ken led the ♦Q from hand and when South won the ace, Ken called for a spade from dummy! There were diamonds there, but no one but the kibitzer, Laurie (his wife), noticed the revoke! Dummy dutifully played a spade, and North led another heart, ruffed with the 8 by South. Ken overruffed, and to turn the knife in the wound he offered this aside to Laurie: "That's how we draw trumps in the old country!!"

Laurie still resisted the urge to say anything - she let Ken cash the ♣J to throw dummy's fourth spade. South ruffed with his king but now declarer could ruff the spade loser in dummy! Plus 130!

At two o'clock in the morning at the coffee bar, Laurie was finally able to convince Ken that this was how he had played the hand and that he had indeed revoked. In the morning Ken persuaded the director that equity demanded that they adjust the score. But it made no difference in the final positions.

Rules for appeals

Players who have an appeal pending are requested to appear at the appeals screening room no later than 30 minutes following the completion of play in the session.

Appellants who fail to appear within this period may have their appeal dismissed or may be subject to penalty. Non-appellants who fail to appear will forfeit their right to provide statements in their own behalf.

Bid Box Alerts and Announcements

When using bid boxes, ACBL suggests that players tap the Alert strip and say "Alert" at the same time.

When making an announcement, use the announcement word -- such as "transfer" -- and tap the Alert strip at the same time.

A player who Alerts or announces a bid should make sure his opponents are aware that an Alert or announcement has been made.

It wasn't as it first appeared

By Tim Bourke

On this hand from the semifinals of the North American Swiss Teams, I chose rather poorly in placing the final contract:

Dlr: North ♠ 8
 Vul: E-W ♥ Q 5
 ♦ A K 10 3
 ♣ K Q J 10 7 6

| | |
|-----------|-----------|
| ♠ A Q 4 3 | ♠ J 5 2 |
| ♥ 10 8 6 | ♥ J 9 3 2 |
| ♦ 8 7 5 2 | ♦ Q 9 6 |
| ♣ 3 2 | ♣ 9 5 4 |

♠ K 10 9 7 6
 ♥ A K 7 4
 ♦ J 4
 ♣ A 8

| West | North | East | South |
|------|-------|------|--------|
| | 1♣ | Pass | 1♠ |
| Pass | 2♦ | Pass | 2♠ (1) |
| Pass | 3♣ | Pass | 4NT |
| Pass | 5♠ | Pass | 6NT |

All pass

(1) Forcing (2♥ would show a weak hand).

While the reverse may be light by North American standards, the playing strength of the hand makes it an attractive choice in Acol. Still, even without seeing the North hand, a concluding bid of 6♣ is clearly superior to 6NT as partner is more likely to be have a singleton in spades than hearts.

After West led the ♦8 to the ace and East played the 9, I placed the ♦Q on my right. While I could have relied only on the ♠A being outside, I saw that East would come under pressure if he held at least four hearts as well as the ♦Q. I saw that after five rounds of clubs, these cards would remain:

♠ 8
 ♥ Q 5
 ♦ K 10 3
 ♣ 7

| | |
|----------|-----------|
| ♠ A Q | ♠ J |
| ♥ 10 8 6 | ♥ J 9 3 2 |
| ♦ 7 5 | ♦ Q 6 |
| ♣ - | ♣ - |

The final club would force East to part with a major-suit card. If it was his last spade, I could develop a diamond trick. If he threw a heart, that suit would produce four tricks.

Honesty compels me to admit the bad news was that it was West who had four hearts and the contract could not be made legitimately. However, the good news was that on the run of the clubs West threw one heart and East three, so that the seven outstanding hearts broke 3-0, allowing me to make a 12th trick after all.

Online partnership desk

Player Howard Montemurro of Caledon ON wrote the following e-mail to Las Vegas tournament staffer Helen Allen.

"Just a short note to thank you for hosting the Internet partnership desk. As a computer professional (retired) I know that a lot of work went into making it all possible. I truly believe that many of those people running around the hallways looking for a partner at the last minute would be surprised at the amount of searching, selecting and filtering that could be done on your site prior to traveling to Las Vegas. Maybe I should write a short letter to *The Bridge Bulletin* about it. Why? My short search and a reply from Florida netted a "complete fit" of a partner. Although we played only twice, we won two trophies in the 299ers (pairs and teams). It works!

Also, the "newcomer" partnership staff was huge. Energetic, friendly and sympathetic — something one doesn't always find at a bridge tournament."

Japanese perform well in Las Vegas

Japan's representatives have done well at this NABC. They have won several of the regional championships, and one of their teams is doing well in the Reisinger Board-a-Match Teams. A few years ago a pair of Japanese women placed second in the NABC Women's Pairs.

This of course should come as no surprise inasmuch as Japan has won several Far East championships and has sent representatives to the major world championships on many occasions.

Japanese players enjoy North American championships because the bidding often is similar to what they are used to. Also American tournaments are run along the same lines as Japanese championships.

Twin peaks

By Barry Rigal

Unquestionably the hand of the event from my perspective was the following Reisinger deal (Board 12 from the first qualifying session). First of all let's watch Jason Hackett of England at work.

Dlr: West ♠ Q J 10 7
 Vul: N-S ♥ K 8 6 4 2
 ♦ 3
 ♣ Q 10 5

♠ A K 8 3 ♠ 9 5 4
 ♥ A Q 7 ♥ J
 ♦ 10 7 2 ♦ A Q J 9 6 5
 ♣ J 8 6 ♣ 7 4 3

♠ 6 2
 ♥ 10 9 5 3
 ♦ K 8 4
 ♣ A K 9 2

| | | | |
|---------|-------|---------|----------|
| West | North | East | South |
| 1NT (1) | Pass | 2NT (2) | Pass |
| 3♣ (3) | Pass | 3♦ | All Pass |

- (1) 14-16 HCP.
- (2) Conditional transfer to diamonds.
- (3) Does not have a good fit for diamonds.

The defense started with the ♣A-K and a third club to the queen. North shifted to a trump, the queen losing to the king followed by a shift to hearts. Since South had passed and so far had shown 10 HCP, Jason knew the heart finesse would lose, so he rose with the ace and ran the trumps. This was the four-card ending, with North still to make a pitch:

| | |
|----------|---------|
| ♠ Q J 10 | ♠ 9 5 4 |
| ♥ K 8 | ♥ — |
| ♦ — | ♦ 5 |
| ♣ — | ♣ — |
| ♠ A K | ♠ 6 2 |
| ♥ Q 7 | ♥ 10 9 |
| ♦ — | ♦ — |
| ♣ — | ♣ — |

North can't do anything here. If he pitches a spade, declarer takes trick 13 with the ♠9. If he sluffs a heart, the ♥Q takes the last trick – a classic ruffing squeeze.

Jason's maneuver was equaled if not surpassed by Bob Lipsitz who reached 3NT after 1♦ - 3♦; 3NT.

After the ♠Q was taken by the ace, declarer ran the ♦10, which was ducked. On the second diamond North pitched a middle heart while East took the king to play the ♣A. North sensibly realized that it was not clear to encourage a club shift (if declarer has 3-3-3-4 shape three rounds of clubs would give him his ninth trick), so he discouraged. South shifted back to spades, and Lipsitz knew the finesse was wrong from North's earlier plays. He won the ♠K and ran the diamond suit to reach this position on the final diamond:

| | |
|--------|---------|
| ♠ J | ♠ 9 |
| ♥ K 8 | ♥ J |
| ♦ — | ♦ 5 |
| ♣ Q 10 | ♣ 7 4 |
| ♠ 8 | ♠ — |
| ♥ A Q | ♥ 10 9 |
| ♦ — | ♦ — |
| ♣ J 8 | ♣ K 9 2 |

On the last diamond South pitched a club, West his spade and North had to throw a club. Next came a club from dummy – and what was South to do? If he hopped up with the king, Lipsitz's ♣J would be good. If he ducked, North could cash his black winners and then be endplayed to lead a heart at trick 12. That one is a wrinkle!

New Diamond LM

Bob Leubkeman of Walnut Creek CA became a Diamond Life Master (more than 5000 points) as a result of the points he has won at this tournament.

Reno has record, not Las Vegas

Earlier in this tournament we stated that Las Vegas was likely to have the largest total attendance at each of the three North American Championships. Yesterday Las Vegas took over for the Fall, and they have long since held the Summer record. But Las Vegas has never held the Spring record – for a very good reason. Las Vegas has never hosted a Spring championship!

Reno holds the record for the Spring -- 13,967 tables in 1998. Reno also has the second best record – 13,807.5 tables in 1989.

Double endplay

David Milton of Herndon VA found a way to endplay each opponent on this deal from Sunday's Midnight Zip Swiss. Milton was playing with partner Howard Einberg.

| | |
|--------------|-------------|
| ♠ A J 10 | ♠ K 9 6 5 4 |
| ♥ Q 9 5 3 | ♥ K J 8 |
| ♦ A 9 2 | ♦ Q 7 5 |
| ♣ 8 7 4 | ♣ 5 3 |
| ♠ 7 2 | ♠ Q 8 3 |
| ♥ 10 | ♥ A 7 6 4 2 |
| ♦ J 10 8 6 3 | ♦ K 4 |
| ♣ K Q J 9 6 | ♣ A 10 2 |

| | | | |
|----------|--------|------|-------|
| West | North | East | South |
| Pass | Pass | Pass | 1♥ |
| 2NT | 3♣ (1) | Pass | 3♥ |
| All Pass | | | |

- (1) Limit raise in hearts.

West led the ♣K, ducked by declarer, and continued with the ♣Q. Milton won the ace, eliminated the diamonds, cashed the ♥A and played another heart. When West showed out on the second trump, Milton had a complete count on the hand thanks to West's 2NT call. West was likely 2-1-5-5, so East was 5-3-3-2. The minor-suit cards had been stripped from the East hand, so after winning the ♥J and cashing the trump king, East was forced to lead a spade into the dummy. This was the position:

| | |
|----------|-------------|
| ♠ A J 10 | ♠ K 9 6 5 4 |
| ♥ Q | ♥ — |
| ♦ — | ♦ — |
| ♣ 8 | ♣ — |
| ♠ 7 2 | ♠ Q 8 3 |
| ♥ — | ♥ 7 |
| ♦ J | ♦ — |
| ♣ J 9 | ♣ 10 |

East was forced to lead a spade away from the king. Declarer won the ♠10, cashed the ♠A and then exited with a club to West. It was then West's turn to give declarer a trick, since either minor-suit exit would present declarer with a ruff-and-sluff.

Declarer lost two clubs and two trumps to make the contract. Plus 140.

Ordering Daily Bulletins

Want to order a set of Daily Bulletins for yourself or a friend who couldn't attend?

Send \$15 (check or money order) with your name and address to ACBL, 2990 Airways Blvd., Memphis TN 38116-3847. Or call the ACBL Membership Assistance Department at (800) 467-1623 (2623 in Canada) to order by phone.

Second hand high

Peter Weichsel found an important defensive play on this deal from the second qualifying round of the Reisinger Board-a-Match Teams. Weichsel was playing with partner Alan Sontag on the squad captained by Rose Meltzer.

Dlr: West ♠ 7 5 2
 Vul: N-S ♥ J 10 7 5
 ♦ K 9 5 4
 ♣ 6 2

♠ 10 6 ♠ A Q J 9 4 3
 ♥ K ♥ A 8 3
 ♦ Q J 8 6 3 ♦ 10
 ♣ K 8 7 5 4 ♣ A J 3

♠ K 8
 ♥ Q 9 6 4 2
 ♦ A 7 2
 ♣ Q 10 9

| | | | |
|------|----------|------|-------|
| West | North | East | South |
| Pass | Pass | 1♠ | Pass |
| 1NT | Pass | 3♠ | Pass |
| 4♣ | All Pass | | |

South led the ♥2 (low from odd), won in dummy with the king. Declarer then played a low diamond toward the closed hand.

Weichsel made the key play of rising with the ♦K and returning a trump. Declarer finessed, losing to South's king, and Sontag continued with a trump.

Declarer won in dummy and took the ruffing finesse in diamonds, pitching a club. Sontag won the ♦A and declarer soon claimed 10 tricks.

Note that had Weichsel not risen with the ♦K at trick two, North would have been exposed to the ruffing finesse, allowing declarer to score 11 tricks. This is exactly what happened at the other table, giving the Meltzer squad a win on the board.

Queen's gambit

By Barry Rigal

One of the side benefits of failing to qualify for the finals of the Edgar Kaplan Blue Ribbon finals is that you get to sample the delights of the Stratified Pairs. When that happens, you get a horde of "well-wishers" coming up and asking solicitously if you are in the wrong room.

Unperturbed by that, Tony Forrester of England played with James Mates and concocted the following gem.

Dlr: North ♠ Q J 10 9
 Vul: None ♥ A Q J 4 2
 ♦ A Q
 ♣ 10 3

♠ K 8 5 3 2 ♠ A 7 6 4
 ♥ 8 6 ♥ K 10 7 5 3
 ♦ 9 8 5 3 ♦ K
 ♣ 7 5 ♣ Q 8 4

♠ —
 ♥ 9
 ♦ J 10 7 6 4 2
 ♣ A K J 9 6 2

| | | | |
|------|-------|----------|-------|
| West | North | East | South |
| Pass | 1♥ | Pass | 2♦ |
| Pass | 2♠ | Pass | 3♣ |
| Pass | 3NT | Pass | 4♣ |
| Pass | 6♦ | All Pass | |

Mates did very well to start with a spade, and Tony's ace was ruffed away. Declarer played the ♣A-K and ruffed a club . . . not so fast! On the second top club Tony dropped the queen! That persuaded declarer to table the ♦J, losing to the king. Back came a spade and declarer ruffed. He cashed the ♦A, and when the 4-1 split came to light declarer was dead. He could not get off dummy without forcing himself again, and he finished four in the glue. Had Tony removed the losing option in trumps, declarer would have had 12 tricks easily.



Rose

Continued from page 1

the eighties to 38. Peter (Weichsel) told me not to worry, they'd take care of the rest. And they did – after the next set we were tied. We lost 2 IMPs in the next-to-last set.

“Going into the last 16 boards, my warriors were armed for battle like Spartan soldiers. They fought the good fight, and when this hand came up, the championship was on the line.”

♠ K Q 8 6
♥ 9 7 2
♦ J 10 9 2
♣ K 9

♠ 9
♥ A K Q 10 6
♦ A 4
♣ A 10 5 4 2

♠ A J 10 7
♥ J 8 5 4
♦ Q 7 6 5
♣ 7

♠ 5 4 3 2
♥ 3
♦ K 8 3
♣ Q J 8 6 3

At one table the Chip Martel and Lew Stansby stopped in 4♥, making six. However, the Norwegians got all the way to slam. But Weichsel was equal to the occasion – he led the deuce of hearts! That stopped the crossruff from working – there was no way declarer could ruff his fifth club so he was set a trick. That was the impetus the Americans needed to go on to the world championship.

Rose has a scrapbook of the tournament, and emblazoned on the cover is the deuce of hearts that Weichsel led. The deuce of hearts has become Rose's favorite card – perhaps forever.

“The Norwegians were perfect gentlemen in defeat,” said Rose. Geir Helgemo told her he always rooted for her, but just this one time he was hoping she would come in second.

How did Rose come out of nowhere and put together a team that now rates as the best in the world? “I retired from industry four years ago, and my friend Rita Shugart told me it was time! She introduced me to Peter Weichsel, and I told Peter to look me up if he ever needed to tie up with a new team. At the time Peter was on George Jacobs' team. Then George decided to play with the four Italians he has on his team now, so Peter looked me up.”

Let's let Peter take over at this point. “Rose and I became good friends almost instantly. The first time we played together was in the Las Vegas Regional in June 1998. We did well, and I told her a good team might become available soon. When I got back together with Alan Sontag, the old magic was there again. Rose gets such a kick out of us – she calls us the Odd Couple. She considers me to be the serious straight man, and Alan is wild and unpredictable.

“I got Kyle Larsen to play with her, and that partnership worked from the beginning. Kyle is perfect for her – he is absolutely unflappable.

“I thought it would take five years, but becoming champions turned out to be only a two-year program – 22 months actually. We started slowly, but we have been on top of the world for the last couple of years.”

How does Rose feel about her team? “I feel I have the two best partnerships in the country, perhaps in the world. It was so wonderful that Chip and Lew agreed to join our team. And of course I consider Kyle to be the perfect partner. We all love each other, and we don't let anybody on the team get down. We're right there to raise the spirits of anyone who needs it.”

Clearly the formula works. Her in Las Vegas they have even added the Board-a-Match Teams to their victory list. What's next?

John Herrmann goes over 10,000 points

John Herrmann of Chattanooga TN won the side game with Jean Willis of El Dorado AR last night, and that gave him enough points to go over the 10,000 mark.

Herrmann has been a full-time bridge pro for the past 22 years, but he was a math teacher prior to that. His best finish in a North American championship was a second in the first-ever North American Swiss in Atlanta in 1977.

REISINGER BOARD-A-MATCH TEAMS QUALIFIERS

| | | |
|----|--|-------|
| 1 | Jack Coleman, San Francisco CA; Bob Crossley, Corte Madera CA; Aleksandr Petrunin-Andrew Gromov, rUSSIA; Cezary Balicki - Adam Zmudzinski, Poland | 35.30 |
| 2 | Roy Welland - Bjorn Fallenius - Brad Moss, New York NY; Fred Gitelman, Toronto ON; Steve Garner, Northfield IL; Howard Weinstein, Sarasota FL | 33.69 |
| 3 | Ata Aydin - Gokhan Yilmaz, Istanbul, Turkey; Nafiz Zorlu - Salvador Assael, Turkey | 33.30 |
| 4 | George Jacobs, Burr Ridge IL; Ralph Katz, Hinsdale IL; Norberto Bocchi, Milano IT; Giorgio Duboin, Torino IT; Alfredo Versace - Lorenzo Lauria, Rome IT | 32.10 |
| 5 | Richard Zeckhauser, Cambridge MA; Geir Helgemo, Trondheim, Norway; Michel Abecassis, France; Barnet Shenkin, Boca Raton FL | 31.90 |
| 6 | David Mossop, England; Paul Hackett - Jason Hackett, Manchester, England; Tim Rees, Crowthorne Berk; England Haig Tchamitch, Peoria AZ | 31.30 |
| 7 | Rita Shugart, Pebble Beach CA; Andrew Robson, Santa Cruz CA; Tony Forrester, Herrefordshire, England; Boye Brogeland, Fyllingsdalen, Norway | 31.10 |
| 8 | Richard Schwartz, East Elmhurst NY; Michael Becker - Larry Cohen, Boca Raton FL; Zia Mahmood, New York NY; Michael Rosenberg, Wykagyl NY; David Berkowitz, Old Tappan NJ | 30.70 |
| 9 | Nick Nickell, New York NY; Richard Freeman, Atlanta GA; Bob Hamman, Dallas TX; Jeff Meckstroth, Tampa FL; Eric Rodwell, Clearwater FL; Paul Soloway, Mill Creek WA | 30.50 |
| 10 | Rose Meltzer - Peter Weichsel, Los Gatos CA; Chip Martel, Davis CA; Lew Stansby, Castro Valley CA; Alan Sontag, Gaithersburg MD; Kyle Larsen, San Francisco CA | 30.40 |
| 10 | Gerald Sosler - Kay Schulle, Purchase NY; Massimo Lanzarotti - Andrea Buratti, IT | 30.40 |
| 12 | Steve Zolotow, Las Vegas NV; Jeffrey Rothstein - G. Margie Gwozdziński, New York NY; Jerry Goldberg, Yonkers NY; Ilya Levitin, Emerson NJ; Steve Scott, Phoenix AZ | 30.03 |
| 13 | Michael Moss, New York NY; Martin Schifko, Graz A; Darren Wolpert, Thornhill ON; Jurek Czyzowicz, Aylmer PQ | 29.90 |
| 14 | Walter Schafer Jr, Aurora IL; Royce McCray, Caddo Mills TX; David Lehman, Glenview IL; Dick Melson, Chicago IL; Mark Feldman, New York NY; William Pollack, Warren NJ | 29.40 |

NORTH AMERICAN SWISS TEAM QUALIFIERS

| | | |
|----|--|--------|
| 1 | Richard Coren, Fort Lauderdale FL; Bill Eisenberg, Sunny Vale FL; Larry Cohen, Las Vegas NV; Drew Casen, Boca Raton FL | 117.35 |
| 2 | Peggy Kaplan, Minnetonka MN; Curtis Hastings, San Mateo CA; Dick Bruno, Washington DC; William Wickham, Los Angeles CA; Stanley Katz, Palm Harbor FL; Ginny Schuett, Riverwoods IL | 116.30 |
| 3 | Lynn Baker, Austin TX; Kerri Sanborn, Stony Point NY; Karen McCallum, Exeter NH; Matt Granovetter, Kennesaw GA | 115.56 |
| 4 | Richard Budd, Portland ME; Lloyd Arvedon, Bedford MA; William Esberg, Long Branch NJ; Mark Itabashi, Murrieta CA; Robert Ryder, Caldwell NJ; Pat McDevitt, Brookline MA | 112.37 |
| 5 | Michael Hargreaves - Doug Fraser - Sandra Fraser, Victoria BC; Gordon McOrmond, Surrey BC; Dan Jacob, Burnaby BC | 111.05 |
| 6 | Ralph Cohen, Memphis TN; R Jay Becker - George Tornay Jr, New York NY; James Ward, Champaign IL; Bud Marsh, Scottsdale AZ; William Doroshov, Skokie IL | 110.93 |
| 7 | Leonard Ernst, Las Vegas NV; Richard Halperin, Highland Park IL; Colin Revill, Burlington ON; Paul Erb, Austin TX; George Pisk, Manchaca TX | 109.33 |
| 8 | David Siebert, Little Rock AR; John Onstott, New Orleans LA; Harvey Brody, San Francisco CA; Douglas Dang, San Mateo CA | 108.12 |
| 9 | Fred Theurkauf - Donald Foote, Pasadena CA; Mike Spero, Burbank CA; Birger Holmquist, Chatsworth CA | 106.51 |
| 10 | George Rosenkranz, Mexico City; Eddie Wold, Houston TX; John Mohan, Christiansted VI; Sam Lev, New York NY; Jacek Pszczoła - Piotr Gawrys, Poland | 105.26 |
| 11 | Joseph Kivel, Newport Coast CA; Jeffrey Goldsmith, Pasadena CA; Evan Bailey, San Diego CA; Michael Shuster, San Leandro CA | 105.02 |
| 12 | Daniel Boye, Syracuse NY; Barrett Raff, Johnson City NY; Rita Ellington, Fairfield CT; Martin Caley, Montreal PQ; Robert Teel Jr - Jane Teel, Rockford AL | 104.33 |
| 13 | Marilyn Garcia, Daytona Beach FL; Ron Smith - Linda Smith, Hixson TN; Cindy Marshall, Knoxville TN; Spike Lay, Ormond Beach FL | 102.58 |
| 14 | Bill Cook Jr, Madison MS; Larry Griffey - Candace Fowler Griffey, Daytona Beach FL; Joan Jackson - Petra Hamman, Dallas TX; Nell Cahn, Shreveport LA | 100.19 |
| 15 | Diana Holt, Palm Beach FL; Ed Schulte, Tampa FL; Joseph Godefrin, Sarasota FL; Richard Miller, Raleigh NC; Jerry Helms, Charlotte NC | 97.12 |
| 16 | Dan Fowler, Salisbury NC; John Potter, Panama City FL; Hugh Brown Jr, Mc Cormick SC; Tom Callahan, Covington VA | 97.05 |
| 17 | Jack Bryant, Saint Louis MO; Ed Groner, Duncan OK; Martin Chaitt, West Palm Beach FL; Ellasue Chaitt, Palm Bch Gdns FL | 95.93 |
| 18 | G S Jade Barrett - Ann Labe - Karen Barrett, Vancouver WA; Allan Graves, West Newbury VT; Herbert Taylor - Chester Johnson, Chicago IL | 95.05 |
| 19 | Mark Gordon, Purchase NY; Winthrop Allegaert, New York NY; Markland Molson, Miami FL; Boris Baran, Cote Saint-Luc PQ; Gary Gottlieb, Brooklyn NY; Richard Zucker, Dobbs Ferry NY | 94.51 |
| 20 | Marc Zwerling - Mark Tolliver - Randy Pickett, Portland OR; Wolfe Thompson, Lake Oswego OR | 94.16 |
| 21 | Paul Lewis - Linda Lewis, Vashon WA; Ivar Stakgold, Wilmington DE; Daniel Rotman, Aventura FL; Murray Melton, Las Vegas NV; Simon Kantor, Agawam MA | 94.09 |
| 22 | Claire Tornay, New York NY; Paul Morris, Brooklyn NY; Benito Garozzo - Lea Dupont, Rockland DE | 93.79 |
| 23 | Joseph Livezey, Paoli PA; Connie Goldberg - Larry Goldberg, Merion Station PA; Barry Goren, San Francisco CA; Jeffrey Starr, Las Vegas NV; David Levy, Cannes La Bocca FR | 93.44 |
| 24 | Ted Gibbs, Rncho Pls Vrd CA; Alan Myerson, Sherman Oaks CA; Phil Schaefer - Nell Schaefer, Los Angeles CA | 93.33 |
| 25 | Jack Feagin Jr - Kevin Collins - Patricia Tucker - Claudia Feagin, Atlanta GA | 92.44 |
| 26 | Andy Altay, Willowdale ON; David Lindop, Toronto ON; Rick Delogu, Waterloo ON; Michael Roche, Don Mills ON; John Duquette, Oshawa ON | 92.26 |
| 27 | Janet Colchamiro - Mel Colchamiro, Merrick NY; Betty Bloom - Steve Bloom, Duanesburg NY; Kitty Munson Cooper - Steven Cooper, Albuquerque NM | 91.84 |
| 28 | Connie Coquilllette - Sherwin Moscow, West Linn OR; Victor Quiros III, Vancouver WA; Lisa Fishman, Beaverton OR; Ray Miller - Barrie Wall, Seattle WA | 91.47 |
| 29 | Rebecca Clough - Roger Clough, Culver City CA; Joseph Payne - Mary Lou Payne, Los Angeles CA | 90.26 |
| 30 | Steve Bruno - Darrell Keel, Peoria AZ; Michael Levy, Tucson AZ; Joe Harris, Albuquerque NM | |

2ND MONDAY FLIGHT A/X PAIRS

| | | | | | |
|----------|----|---|--|--------|--|
| 70 Pairs | A | X | | | |
| 31.82 | 1 | 1 | Loarn Thoelecke, San Anselmo CA; Roy Hoppe, San Rafael CA | 863.75 | |
| 23.87 | 2 | | Phyllis Yates, Bonita CA; Terry Schleppegrell, Anchorage AK | 837.73 | |
| 17.90 | 3 | | Stephen Aarons, North York ON; Wayne Timms, Waterloo ON | 830.20 | |
| 13.42 | 4 | 2 | Donald Sache, Delta BC; Dennis Groden, West Vancouver BC | 820.26 | |
| 10.07 | 5 | | Charles Parker - Shelley Parker, Apex NC | 810.17 | |
| 7.55 | 6 | | Ed Lewis, Falls Church VA; Earl Glickstein, Gaithersburg MD | 809.61 | |
| 5.66 | 7 | | Natsuko Nishida - Yasuhiro Shimizu, Setagaya-Ku Tokyo JP | 802.74 | |
| 4.25 | 8 | | Hal Hindman, Fairfax VA; Marshall Kuschner, Reston VA | 800.35 | |
| 9.78 | 9 | 3 | David Graff, Ann Arbor MI; David Kogut, Statesville NC | 797.04 | |
| 5.37 | 10 | | Judy Wadas - Bart Bramley, Chicago IL | 788.29 | |
| 2.89 | 11 | | Joe Quinn, Katy TX; Ira Hessel, San Antonio TX | 787.93 | |
| 2.65 | 12 | | Sharon Meng, Tampa FL; Rahn Smith, Brandon FL | 780.23 | |
| 7.34 | 13 | 4 | Carol Hamilton - James Hamilton, Sarasota FL | 775.94 | |
| 2.27 | 14 | | Stephen Fuerst - Marty Rogers, Rancho Cordova CA | 774.63 | |
| 5.50 | | 5 | Hiroko Janssen, Minato-Ku Tokyo 1; Yasuko Shrenzel, Kihei HI | 769.87 | |
| 4.13 | | 6 | Gloria Rabinowitz - Martin Rabinowitz, Narberth PA | 759.75 | |
| 3.10 | | 7 | Susan Culham, Edmonton AB; Daniel Bertrand, Calgary AB | 733.85 | |

2ND MONDAY BOARD-A-MATCH TEAMS

| | | | | | |
|----------|-----|-----|---|--|-------|
| 46 Teams | A | B | C | | |
| 9.34 | 1 | | | Jackie Boisseau, Etobicoke ON; P Schwartz, Cote Saint-Luc PQ; Jonathan Greenspan - Joyce Sillins, New York NY | 17.50 |
| 7.01 | 2 | 1 | 1 | D Shepler - Mary Boyd, Charleston WV; Larry Silver - Christine Silver, San Francisco CA | 16.00 |
| 3.59 | 3/6 | | | Corinne Kirkham - Jim Kirkham, San Bernardino CA; Debbie Gailfus - Alan Gailfus, San Diego CA | 15.50 |
| 3.59 | 3/6 | | | Garey Hayden, Tucson AZ; Michael Whitman, San Francisco CA; Geoff Hampson, Los Angeles CA; Jim Robison, Las Vegas NV | 15.50 |
| 3.88 | 3/6 | 2 | 2 | Henry Essig, Westlake OH; Joyce Gautier - Norman Gautier, The Woodlands TX; Alex Kennedy, Council Bluffs IA | 15.50 |
| 3.59 | 3/6 | | | Pushpa Jain, Ottawa ON; Robert Hollow, Madoc ON; Adam Miller, Champaign IL; Cole Powell, Oakland CA | 15.50 |
| 2.91 | | 3 | 3 | Susan Kraght, Poulsbo WA; N Scott Cardell, Pullman WA; Alice Ellenberg, Greenville SC; Howard Stein, Simpsonville SC | 15.00 |
| 2.18 | | 4 | | Nathaniel Reid - Barbara Boswell, Cincinnati OH; Karol Monroe, Newport OR; Paul McGough, Langley WA | 14.00 |
| 1.12 | | 5/8 | | Renato Robledo, Philadelphia PA; Jean Monette, Hallandale FL; Nina Lubick-Reich, Fullerton CA; Gary Moore, Beverly Hills CA | 12.50 |
| 1.12 | | 5/8 | | Kai Hsi, Ann Arbor MI; Rhonda Monro, Beverly Hills MI; Clara Curtis, Palm Springs CA; Barbara Benson, Santa Ana CA | 12.50 |
| 1.12 | | 5/8 | | Roger Smith, Sacramento CA; Nancy Zakim, Kentfield CA; Nick Bailey, San Marcos CA; David Kayner, Las Vegas NV | 12.50 |
| 1.12 | | 5/8 | | Lynn Rattinger, Roanoke VA; Sharon Hurd, Severn MD; Cordette Wall, Birmingham AL; Silvana Bellini, St Petersburg FL | 12.50 |
| 1.30 | | 4/5 | | Alisha Hudson, Walnut Grove CA; Andrew Steinheimer, Oakland CA; Stacey Huie - Jeremy Huie, Pleasant Hill CA | 11.00 |
| 1.30 | | 4/5 | | Bonnie Gellas - Laura Tolkow - Pennell Somsen - Terry Oleske, New York NY | 11.00 |

2ND MONDAY STRATIFIED B/C/D PAIRS

| | | | | | |
|----------|---|-----|---|--|--------|
| 90 Pairs | B | C | D | | |
| 16.56 | 1 | | | Gordon Grossetta - David Rinehart, Tucson AZ | 372.50 |
| 12.42 | 2 | | | Michael La Beau, Mechanicville MD; Steve Sperry, Mechanicsville VA | 371.50 |
| 9.32 | 3 | | | Kelsey Nickerson, Bedford MA; Natalie Bassil, Boston MA | 370.00 |
| 8.40 | 4 | 1 | | Thomas Gray, Tempe AZ; Daniel McGuire, Las Vegas NV | 367.00 |
| 5.24 | 5 | | | Janet Dunbar, Calgary AB; Al Quaille, Newmarket ON | 363.50 |
| 3.93 | 6 | | | Bud Biswas, Lexington MA; Peter Morse, North Vancouver BC | 356.50 |
| 3.02 | 7 | | | Connie Pugh, Columbia MO; Thomas Ahmann Sr, Mexico MO | 354.00 |
| 6.30 | | 2 | 1 | Stevan Johnson - Charlyn Johnson, Orange CA | 346.50 |
| 4.73 | | 3 | | Edith Huffman, Woodinville WA; Anne Kao, Bellevue WA | 338.50 |
| 3.54 | | 4 | | Gail Whiteley, Carlsbad CA; Alain Schreiber, Rancho Santa Fe CA | 336.00 |
| 3.76 | | 5 | 2 | Terry Martin, Parkside SK; Lawrence Mason, Fort Collins CO | 335.50 |
| 2.82 | | 6 | 3 | Mika Lidov - Rick Barabino, New York NY | 332.00 |
| 2.15 | | 4 | | Derek Fiero - Teddi Fiero, Pleasanton CA | 328.00 |
| 1.59 | | 5 | | Michael Nabrynski - Jennifer Nabrynski, Ashland MA | 325.00 |
| 2.22 | | 6/7 | | Alan Hamilton - Susan Hamilton, Berkeley CA | 324.50 |
| 2.67 | | 6/7 | | Carol Frank, Burbank CA; Martin Gayle, Ridgeland MS | 324.50 |

2ND MONDAY EVENING I/N SWISS TEAMS

| | | | | | |
|----------|---|---|---|--|-------|
| 10 Teams | A | B | C | | |
| 2.80 | 1 | | | Peggy Ellis - LouAnn O'Sullivan, New York NY; Patricia Braun, Arlington Hts IL; Caroline Cantrell, Memphis TN | 55.00 |
| 2.10 | 2 | 1 | 1 | Barbara Mays, Collierville TN; Peggy Mc Fall, Cordova TN; Phil Rouse - Rebecca Rouse, Marion IN | 54.00 |
| 1.58 | 3 | 2 | | Roger Niemi - David Gustafson - Barbara Lander - James Earlam, Henderson NV | 47.00 |
| 1.18 | 4 | | | Richard La Bahn - Virginia La Bahn, Orange CA; Jan Nortman - Henry Nortman, Youngsville LA | 46.00 |

2ND MONDAY EVENING 300/200/100 PAIRS

| | | | | | |
|----------|---|---|---|---|--------|
| 27 Pairs | A | B | C | | |
| 3.36 | 1 | | | Judy McCaffrey - John McCaffrey, Oceanside CA | 165.00 |
| 2.52 | 2 | | | Alan Griswold, Indianapolis IN; Richard Jones, Anderson IN | 162.14 |
| 1.89 | 3 | | | James McCartney - Louise McCartney, Ottawa ON | 161.84 |
| 2.57 | 4 | 1 | | James Fallis - Alice Fallis, Wichita KS | 152.24 |
| 1.93 | 5 | 2 | 1 | Richard Colwell - Rosemary Colwell, Colorado Spgs CO | 147.98 |
| 1.45 | 6 | 3 | | Earl Hill, Surprise AZ; Walter Yllo, North Attleboro MA | 146.89 |
| 1.31 | | 4 | 2 | Grady Nichols - Suzanne Nichols, Montevallo AL | 145.37 |
| 0.98 | | 5 | 3 | Frank Hansen - Kathryn Hansen, Henderson NV | 142.62 |
| 0.61 | | 6 | | Clarke Fairbrother, Santa Ana CA; Robert Walton, Culver City CA | 141.74 |
| 0.82 | | 4 | | Peter Rhead - Valerie Rhead, Utterson ON | 131.65 |

LAST 2 DAYS KNOCKOUTS

Bracket 1 16 Teams
John Malley, Pascoag RI; Daniel Colatosti, Waltham MA; Harold
Feldheim, Hamden CT; Paul Kinney, Jamaica Plain MA; James
Murphy, Chesapeake VA

vs
Dennis Kastle, Bloomfield MI; Allan Cokin, Palm Beach FL; Chuck
Burger, West Bloomfield MI; Gary Cohler, Miami FL

Lou Ann O'Rourke, Scottsdale AZ; Billy Miller - Marc Jacobus,
Las Vegas NV; Curtis Cheek, Huntsville AL; Ron Smith, San Fran-
cisco CA; Mark Lair, Canyon TX

vs
Norb Kremer - Lynn Deas, Schenectady NY; Nicolas L'Ecuyer,
Montreal PQ; Jeffrey Ferro, Santa Monica CA; Philip Gordon,
Las Vegas NV; Steve Robinson, Arlington VA

Bracket 2 16 Teams
Barry Schaffer, Frisco TX; Bryan Storey - Nagy Kamel, Plano
TX; Bill Staats, Southlake TX

vs
Lizabeth Kennedy, Germantown WI; Gary Williams, Milwaukee
WI; Martin Morris, Wheeling IL; Barbara Doran, Silver Spring
MD

Nick White, Woodstock GA; Marc Nathan - Cathy Nathan, Thou-
sand Oaks CA; Jan Assini - Peter Grover, Aurora OH

vs
John Kranyak - Kenneth Kranyak - Laurie Kranyak, Bay Village
OH; Joe Grue, Bronx NY; Kent Mignocchi, Glendale CA; Joel
Wooldridge, Buffalo NY

Bracket 3 10 Teams
Walter Pease - Tom Ottley - Douglas H Scott, Anchorage AK;
Charles Heilig, Chesapeake VA

vs
Paul Sorensen - Allan Sorensen, Berwyn AB; Michael Takemori -
Ben Takemori, Vancouver BC

Bonny Letizia - Patsy London - Connie Noel, Louisville KY;
Patricia Buckley, Prospect KY

vs
William Watson, San Mateo CA; Bruce Luttrell - Jeffrey Hu, San
Jose CA; Kou-Ping Cheng, Saratoga CA

Bracket 4 12 Teams
Richard Jacobs, San Jose CA; Thomas Coleman, San Leandro CA;
Robert Wegsten - Joanne Wegsten, San Francisco CA

vs
Kenneth Young - J Charles Comeau - William Whittle Jr - Clyde
Smith, Las Vegas NV

David Pankratz, San Diego CA; Evan Markowitz, New York NY;
Paul Birnbaum, Brooklyn NY; Bruce Neiger, Merrick NY; Dolly
Davis, Sparks NV

vs
Brian Reynolds - Samantha Macdouglass, Van Nuys CA; Jennifer
Chalfan - Chris Moore, South Pasadena CA

New Life Masters

Gwen Cline of Las Vegas, who had very few chances to play this week because she was in charge of giving out section top awards, went over the top in a Seniors Pairs. "I almost made it in the Las Vegas Regional," she said. "I needed 15.31 but I only got 15.29. When I went into the Senior game, I went all out - I bid game on almost every hand and we made the games." Her partner was David Weingarten of Las Vegas.

Glenn Young of Alexandria VA needed eight points when he entered one of the knockout events. He won and it was worth 10 points, so he is now a Life Master. He also has won a side game here. His knockout partner was Carol Garnett of Tampa FL.

Ruth L. Williams of Jacksonville FL made the grade in the Washington Knockouts where she won 11.49 gold points. Her partner was Kathy Bye of Vancouver BC.

Matt Fowler of Winston-Salem NC won the B/C Swiss Teams, winning more than enough golds (he needed 1.5) to go over the top as a Life Master.

Judy Lichter of Los Angeles earned her gold card in the Morning Knockouts.

Christine Wright Silver, playing with her husband Larry, became a Life Master in yesterday's morning side game.

JACKS OR BETTER KNOCKOUTS

Bracket 1 16 Teams
 38.33 1 Ruth-Anne Mazer - Allan Mazer, Towson MD; Ronald Spath, Severna Park MD; Geoffrey Mallette, Christiansburg VA
 28.75 2 Richard Holmes, Wichita KS; Tom Brown, Duncan OK; Jan Benninghoven, Denver CO; Gail Gottlieb, Aurora CO
 19.17 3/4 Harold Simon, Ventura CA; Jiun-Ming Chen, West Lafayette IN; Janet Ju - George Wang, El Monte CA
 19.17 3/4 Ross Spiro, Cherry Hill NJ; Paul Bubendey, Reston VA; Mahmoud Elguindy, Newport Beach CA; Vicki Jane Erickson, Anaheim CA

Bracket 2 16 Teams
 29.67 1 Sali Ma, Birmingham AL; Gordon Adkins, West Chester OH; H Fertig - Eileen Fertig, Winter Springs FL
 22.25 2 Celia Austenfeld, Vestal NY; Millie Vibbard, Lady Lake FL; Connie Anderson - Gerald Vaughan, Knoxville TN
 14.84 3/4 Gregory Gran - Elaine Morrison, Lake Bluff IL; Edward Nield, Westchester IL; Rachel Chittaro, Kildeer IL
 14.84 3/4 Maurice Emond, Allenstown NH; Joan Cook, Bow NH; Mark Teich - Gretchen Teich, Concord NH
 6.68 5/8 Samuel Williams Jr, Vista CA; Allan Schuster, Coronado CA; James Lynch, Newbury Park CA; Burt O'Dell, Helendale CA

Bracket 3 16 Teams
 21.47 1 William Weingarden, Santa Monica CA; Al Blinder, Torrance CA; Delia Juul-Dam - Brian Richardson, Pacific Plsds CA
 16.10 2 James Kehoe, Glen Ellyn IL; Faye Alexiev, San Francisco CA; Robert Walters, Lake Havasu AZ; Laura Mooney, Red Deer AB
 10.74 3/4 Robert Andersen - Sandra Andersen, Prospect KY; David Pricer - Toni Pricer, Henderson NV
 10.74 3/4 Terry Darwin, San Francisco CA; Catherine Fortney, Millbrae CA; David Binney, Seattle WA; Kathy Hauck, Shoreline WA
 4.83 5/8 Geoffrey Cross, Fernandina FL; Marianne Cross, Fernandina Bch FL; F. Marion Fletcher, Statesboro GA; Deb Phillips, N Little Rock AR
 4.83 5/8 Richard Priebe - Beverly Priebe, Houston TX; Joyce Gautier - Norman Gautier, The Woodlands TX

Bracket 4 16 Teams
 15.64 1 Tore Tverraaen, Scranton PA; Denise Hoffman - Glenda Gordon, Marquette MI; Henning Odegaarden, Stathelle, Norw.
 11.73 2 M Mardesich - Cathy Woodburne, Seattle WA; Carter Hoffmann - Pamela Hoffmann, Normandy Park WA
 7.82 3/4 Jerry Newcomb - Carolyn Newcomb, Littleton CO; Lorraine Norton, Dana Point CA; Garth Greene, Playa del Rey CA
 7.82 3/4 Kent Jones - Renate Jones, Ventura CA; Larry Golding - Bette Malone, Camarillo CA
 3.52 5/8 J Coleman - Leona McGiboney, Billings MT; Margret Salazar, Muskego WI; Torchy McCarthy, Calgary AB

Bracket 5 12 Teams
 11.04 1 Karin Rabin - Bill Rabin, San Francisco CA; Shirley Saltzman, Chicago IL; Ilene Grabel, Huntington Bh CA
 8.28 2 Dorothy Peiffer - Patricia Peiffer, Dallas PA; J Caldwell, Lewisville TX; Michael Lombardi, Norman OK
 5.52 3/4 Rita Frushtick, Oceanside CA; Hannah Moon, Prince Albert SK; Amy Peregoodoff, Okanagan Falls BC; Patricia Riding, Smith's BE
 5.52 3/4 Thomas Tortorice, Bonita Spgs FL; Bernice Shahrabani, Deerfield Beach FL; Sylvia Landon - Morris Landon, North Hollywood CA

Bracket 6 13 Teams
 9.70 1 Jane Smith, Flatts BE; Marilyn Simmons - Richmond Simmons, Paget BE; Gertrude Barker, Warwick BE
 7.28 2 Robert Butler - Leonard Rhodes - Nancy Thomas - Ronald Thomas, Las Vegas NV
 4.85 3/4 Constance Fishbach - Anita Levine, Los Angeles CA; Rita Levin, Beverly Hills CA; Harriet Dana, Santa Monica CA
 4.85 3/4 Leon Angel - Judith Angel, Las Vegas NV; Michael Siegmund - Mary Siegmund, Henderson NV

2ND MONDAY SENIOR PAIRS

| 200 Pairs | | A | B | C | | |
|-----------|-----|-----|-----|---|---|--------|
| 23.49 | 1 | | | | Yoshiyuki Nakamura - Haruko Koshi, Tokyo JP | 422.00 |
| 17.62 | 2 | | | | Barbara Fellows - James Fellows, Omaha NE | 385.08 |
| 16.86 | 3 | | 1 | | William Meyer - Ralph Aguado, Las Vegas NV | 379.50 |
| 9.91 | 4 | | | | Robert Donaldson, Ogden UT; Diana Barber, Bozeman MT | 377.05 |
| 7.43 | 5 | | | | Loren Hawkins, Bremerton WA; Ken Kirkpatrick, South Colby WA | 376.30 |
| 5.57 | 6 | | | | Nada Sundermeyer - Clay Sundermeyer, Bellevue WA | 373.04 |
| 3.81 | 7/8 | | | | Ronald Schick - Joy Miller Schick, Naples FL | 373.00 |
| 3.66 | 7/8 | | | | Elaine Ware, Vernon BC; Larry Graft, Roseville CA | 373.00 |
| 2.61 | 9 | | | | Jacqueline Karlen, Las Vegas NV; Ernest Inada, Henderson NV | 370.00 |
| 3.11 | 10 | | | | Vivian Leggett, Waller TX; Ron Woodsum, Houston TX | 368.04 |
| 12.65 | | | 2 | | Cynthia Glad - Don Glad, Seattle WA | 359.00 |
| 9.48 | | | 3 | | Joan Mesias, Temple City CA; Barbara Swan, Roseville CA | 353.50 |
| 7.11 | | | 4 | | John Harpootlian, Menlo Park CA; Robert Ipswitch, San Mateo CA | 352.67 |
| 5.33 | | | 5 | | Sue Frishberg, West Hollywood CA; Mary Olivier, Santa Monica CA | 349.29 |
| 6.86 | | | 6 | 1 | Fran Wakely - David Wakely, Belleair FL | 348.50 |
| 3.00 | | | 7 | | Stella Blodinger - Jack Blodinger, Boca Raton FL | 336.80 |
| 5.15 | | 8/9 | 2 | | M Morgan - H Morgan Jr, Virginia Beach VA | 335.50 |
| 2.30 | | 8/9 | | | John Dockray - Edie Dockray, Villanova PA | 335.50 |
| 3.86 | | | 3 | | Gino Scalandre - Katie Scalandre, New York NY | 333.50 |
| 2.89 | | | 4 | | Mary Henry, Boise ID; J Horsley, Eagle ID | 322.00 |
| 1.90 | | | 5/6 | | Coline Maclean, Los Gatos CA; Edward Sutcliffe, Sonoma CA | 320.50 |
| 1.90 | | | 5/6 | | Aphrodite Rubin, New York NY; Mary Ann Eldridge, Las Vegas NV | 320.50 |

2ND MONDAY DAYLIGHT OPEN PAIRS

| 70 Pairs | | A | B | C | | |
|----------|----|---|---|---|---|--------|
| 27.98 | 1 | | | | Howard Piltch, Andover MA; Alan Boston, Las Vegas NV | 265.19 |
| 20.99 | 2 | | | | Brian Ellis, Twinsburg OH; Bruce Keidan, Pittsburgh PA | 261.00 |
| 15.74 | 3 | | | | Philip Altus - Muriel Altus, Tampa FL | 259.50 |
| 11.80 | 4 | | 1 | | Burton Lipsky, New York NY; Arnold Goldstein, Lake Worth FL | 254.31 |
| 8.85 | 5 | | | | David Garrett, Muskogee OK; Chris Compton, Dallas TX | 251.81 |
| 7.45 | 6 | | 2 | | Michel Carriere, Saint-Bruno PQ; Gilbert Lambert, White Rock BC | 248.00 |
| 4.98 | 7 | | | | Ross Robbins, Port Isabel TX; Bryce Troyer, Joliet IL | 246.19 |
| 3.73 | 8 | | | | Voyteck Pomykalski - K Malette, Cornwall ON | 244.94 |
| 3.11 | 9 | | | | Donna Marshall - David Marshall, Reading MA | 244.50 |
| 5.59 | 10 | | 3 | 1 | Ranjan Bhaduri, Dundas ON; Raymond Jung, Hamilton ON | 241.00 |
| 4.19 | | | 4 | | Ronald Huffaker, Alpine CA; Harold Huffaker, Danville CA | 237.00 |
| 3.14 | | | 5 | | Jane Leslie - Cordette Wall, Birmingham AL | 235.50 |
| 2.57 | | | 6 | | Charles West, Salem OR; Samuel Asai, Hood River OR | 235.00 |
| 4.04 | | | | 2 | Mary Boyd - David Shepler, Charleston WV | 233.50 |
| 3.03 | | | | 3 | Al Bongarzone - Judy Bongarzone, Oak Park CA | 231.50 |
| 2.27 | | | | 4 | Joe Cote, Edmonton AB; Gloria Allan, West Vancouver BC | 220.00 |
| 2.20 | | | | 5 | Joan Jacobson, Centerville MA; Paul Costantino, Rock Springs WY | 218.00 |
| 1.72 | | | | 6 | June Elder - Sue Reed, Fallbrook CA | 216.00 |

MONDAY-TUESDAY SIDE PAIRS

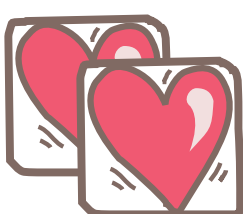
| 86 Pairs | | A | B | C | | |
|----------|---|---|---|---|---|--------|
| 8.04 | 1 | | 1 | 1 | Edward Rainone, Las Vegas NV; Molly Hosford, Las Vegas NV | 216.00 |
| 6.03 | 2 | | | | Jean Talbot - Joan Van Geffen, Metairie LA | 205.50 |
| 4.67 | 3 | | 2 | 2 | Chris Jones - Lilian Jones, Houston TX | 201.50 |
| 3.39 | 4 | | | | Stuart L. Shalom, Actrinncam, England ; Bill Souster, Newport, BE | 191.50 |
| 3.50 | 5 | | 3 | 3 | Patricia Adam - Robert Adam, Huntington Beach CA | 190.50 |
| 1.96 | 6 | | | | Virginia Kitterman, Las Vegas NV; Kathryn Gisler, Bend OR | 190.00 |
| 2.92 | | | 4 | | A Gorson - Norma Weiner, Philadelphia PA | 187.50 |
| 2.04 | | | 5 | 4 | Sakir Sarimakci - Korkut Ergun, Istanbul, Turkey | 186.00 |
| 2.01 | | | 6 | | Robert Ryan, Glen Rock NJ; Gunnar Niemi, Emeryville CA | 181.00 |
| 1.40 | | | | 5 | Mary Gilroy, Forest Hills NY; Van Ziegler, Fallbrook CA | 173.00 |
| 1.01 | | | | 6 | John Weinberg - John Aslin, Mercer Island WA | 170.50 |

2ND MONDAY AFTERNOON 50/100 PAIRS

| 36 Pairs | | A | B | | | |
|----------|-----|---|---|--|--|--------|
| 3.27 | 1 | | | | Barbara Lander - James Earlam, Henderson NV | 165.50 |
| 2.45 | 2 | | 1 | | Carol Weiser, Albuquerque NM; Jana George, Rio Rancho NM | 164.50 |
| 1.61 | 3/4 | | 2 | | Edith Fiore, Sarasota FL; Blanche Grossman, Las Vegas NV | 159.50 |
| 1.61 | 3/4 | | | | Jo Anne Georgi - William Georgi, Kalaheo HI | 159.50 |
| 1.18 | 5 | | 3 | | Norman Wang, Palo Alto CA; James Wu, Fremont CA | 156.50 |
| 0.78 | 6 | | | | Richard Colwell - Rosemary Colwell, Colorado Springs CO | 154.50 |
| 0.89 | | | 4 | | Donna Thorne - Nancy Jansen, Henderson NV | 149.50 |
| 0.74 | | | 5 | | Linda Whitlock - Elinda Guardino, Las Vegas NV | 148.50 |
| 0.50 | | | 6 | | Carol Fredlund - Ann Carlson, Minneapolis MN | 141.50 |

2ND MONDAY AFTERNOON 200/300 PAIRS

| 28 Pairs | | A | B | | | |
|----------|---|---|---|--|---|--------|
| 3.36 | 1 | | 1 | | Anthony Lenzi, Pembroke Pines FL; Scott Keiling, Lghthse Point FL | 182.00 |
| 2.52 | 2 | | | | Carolyn Kwiatek, Mountain View CA; Robert Elliott, Lincoln CA | 163.00 |
| 1.93 | 3 | | 2 | | Patricia Remmer, Ponte Vedra Beach FL; Albert Lewis, Ponte Vedra FL | 160.00 |
| 1.42 | 4 | | | | Donald Smith, Calgary AB; Harold Sanchez, Denver CO | 153.50 |
| 1.06 | 5 | | | | Esther Wallace - Lorine Clark, Las Vegas NV | 152.50 |
| 1.45 | 6 | | 3 | | Man Ho Han, Chicago IL; Chuck Chang, Evanston IL | 152.00 |
| 1.08 | | | 4 | | Bill Willis, El Dorado AR; Margaret McKean, Annapolis MD | 139.50 |
| 0.81 | | | 5 | | Judy Belknap, Henderson NV; Ginger Stickell, Las Vegas NV | 137.50 |
| 0.85 | | | 6 | | Sylvan Steinberg, Skokie IL; Deborah Bronaugh, North Las Vegas NV | 137.00 |



2ND MONDAY AFTERNOON 5/20 PAIRS

| | | | | |
|----------|---|---|--|--------|
| 17 Pairs | A | B | | |
| 1.77 | 1 | 1 | Leslie Kahan - Sylvia Adler, Goleta CA | 110.09 |
| 1.33 | 2 | | Ruth Seldin - Robert Powers, Saint Louis MO | 106.37 |
| 1.00 | 3 | | William Jaras - Carol Jaras, Brecksville OH | 102.02 |
| 0.75 | 4 | 2 | Claudia Vettrano - Geraldine Brurs, | 95.83 |
| 0.56 | 5 | | Marlene McCauslin, Henderson NV; Dianne Rogots, Las Vegas NV | 94.32 |

2ND MONDAY MORNING SIDE PAIRS

| | | | | |
|----------|-----|-----|---|--|
| 58 Pairs | A | B | C | |
| 5.18 | 1/2 | | | Jill Wooldridge, Buffalo NY; Deborah Drury, Vero Beach FL 105.50 |
| 5.18 | 1/2 | | | Tom Wylie, Woodland Hills CA; Gilbert Stinebaugh, Van Nuys CA 105.50 |
| 3.33 | 3 | | | Bob Cole, Bethlehem PA; Raymond Raskin, King of Prussia PA 104.00 |
| 2.50 | 4 | | | Barrett Raff, Johnson City NY; Henry Bethe, Ithaca NY 102.50 |
| 4.70 | 5 | 1 | 1 | Susan Ohlfest, Phoenix AZ; Richard Hunt, Scottsdale AZ 99.50 |
| 1.63 | 6 | | | R Bruce Martin, Paia HI; Merle Stetser, Honolulu HI 99.00 |
| 3.53 | | 2 | | Josephine Grabow, Helotes TX; Mona Mao, Springfield OH 96.50 |
| 2.64 | | 3 | | Ahmed Sorathia, Chino CA; Jeff Strutzel, Redondo Beach CA 96.00 |
| 1.98 | | 4 | | Larry Barr, Austin TX; Roberto Verthelyi, New York NY 95.00 |
| 2.51 | | 5 | 2 | Carole Chiang - Chao-Wang Chiang, Rapid City SD 94.50 |
| 1.61 | 6/7 | | | Dan Durham, Las Vegas NV; Elizabeth Jameson, Central UT 92.00 |
| 1.88 | 6/7 | 3 | | Irwin Meisler, Houston TX; Lowell Porter, Saint Louis MO 92.00 |
| 1.63 | | 4/5 | | Paul Sensmeier - Susie Sensmeier, Yorktown VA 91.50 |
| 1.24 | | 4/5 | | Larry Silver - Christine Silver, San Francisco CA 91.50 |
| 1.06 | | 6/7 | | Kay Johnson, Minneapolis MN; Shirley Rosenblum, Burnsville MN 88.50 |
| 0.69 | | 6/7 | | Donna Rice, Traverse City MI; Henry Essig, Westlake OH 88.50 |

2ND MONDAY MORNING 300/200/50 PAIRS

| | | | | |
|----------|---|---|---|---|
| 48 Pairs | A | B | C | |
| 4.76 | 1 | 1 | 1 | Nancy Jansen - Donna Thorne, Henderson NV 108.50 |
| 3.57 | 2 | 2 | | James Tonjes - Jean Tonjes, Espanola NM 104.50 |
| 2.68 | 3 | 3 | 2 | Jacqueline Williams - Darrell Williams, Littleton CO 103.50 |
| 2.01 | 4 | 4 | | Barbara Chang - Colin Chang, Arlington TX 101.50 |
| 1.51 | 5 | | | Robert Edwards - Vivian Edwards, Palm Beach Gardens FL 101.00 |
| 1.54 | 6 | 5 | | Bob Blackledge - William Nabors, Colorado Springs CO 97.50 |
| 1.08 | | 6 | | Karen Thiel, Shellbrook SK; Eleanor Calder, Stenen SK 93.50 |
| 0.89 | | | 3 | Sara Kuperstein - Hortensia Azerraf, Caracas, Venezuela 91.50 |
| 0.77 | | | 4 | Dilip Maniar, Mentor OH; Rose Hand, Torrance CA 88.50 |

SATURDAY-MONDAY MORNING SIDE GAME - 291 Players

| | | | |
|------|-----|-------------------------------------|---------|
| 6.86 | 1/2 | Elizabeth Nagle, Middletown CT | 120.38% |
| 6.86 | 1/2 | Helma Strauss, Hartford CT | 120.38% |
| 5.21 | 3 | Ahmed Sorathia, Chino CA | 116.66% |
| 5.01 | 4 | Robert Hirschhaut, Boynton Beach FL | 116.37% |
| 3.33 | 5 | Della Willis, Las Vegas NV | 112.20% |
| 3.60 | 6/7 | Roberta Lack, Okemos MI | 111.61% |
| 3.60 | 6/7 | Gary Fan, Florence KY | 111.61% |

SATURDAY-SUNDAY A&E SIDE GAME - 500 Players

| | | | |
|-------|------|------------------------------|---------|
| 17.70 | 1/2 | Bob Yellis, Great Neck NY | 127.09% |
| 17.70 | 1/2 | A Harrison, New York NY | 127.09% |
| 9.96 | 3/4 | Joan Van Geffen, Metairie LA | 124.20% |
| 9.96 | 3/4 | Jean Talbot, Metairie LA | 124.20% |
| 7.24 | 5 | Carol Towle, Grass Valley CA | 119.87% |
| 6.76 | 6 | Barbara Jur, Warren MI | 117.47% |
| 3.15 | 7/8 | Sara Topcu, Sacramento CA | 116.50% |
| 3.15 | 7/8 | Ali Topcu, Sacramento CA | 116.50% |
| 4.17 | 9/10 | Saul Horowitz, Henderson NV | 115.87% |
| 4.17 | 9/10 | Enid Horowitz, Henderson NV | 115.87% |

MONDAY EVENING SIDE PAIRS

| | | | | |
|-----------|---|---|---|--|
| 104 Pairs | A | B | C | |
| 9.40 | 1 | | | Jean Willis, El Dorado AR; John Herrmann, Chattanooga TN 174.50 |
| 7.05 | 2 | 1 | | Jack Hayden - Rosemary Hayden, Las Vegas NV 168.50 |
| 5.29 | 3 | | | James O'Neil, Palo Alto CA; Gary Macgregor, Portola Valley CA 166.00 |
| 5.00 | 4 | 2 | 1 | Lynn MacQuoid - Arlene Elder, Big Bear Lake CA 164.00 |
| 3.75 | 5 | 3 | 2 | Susan Ohlfest, Phoenix AZ; Richard Hunt, Scottsdale AZ 163.50 |
| 2.23 | 6 | | | Phyllis Allmacher, Columbus OH; Larry Paisley, Westerville OH 162.00 |
| 2.81 | | 4 | | Robert Wood, San Francisco CA; Reba Lynch, Fullerton CA 159.50 |
| 2.68 | | 5 | | Leroy Abinanti - Marigail Abinanti, Kent WA 157.95 |
| 2.39 | | 6 | 3 | Patricia Riding, Smith's BE; Margaret McKean, Annapolis MD 155.00 |
| 1.91 | | | 4 | Sakir Sarimakci - Korkut Ergun, Istanbul 147.50 |
| 1.34 | | | 5 | Shirley Rosenblum, Burnsville MN; Kay Johnson, Minneapolis MN 145.54 |
| 1.01 | | | 6 | Norma Cloyd, Paducah KY; Ruth Williams, Jacksonville FL 140.50 |

2ND MONDAY EVENING 50/20/10 PAIRS

| | | | | |
|----------|-----|-----|---|--|
| 12 Pairs | A | B | C | |
| 1.47 | 1/2 | 1 | | Lester Lemke - Barbara Lemke, Las Vegas NV 63.00 |
| 1.47 | 1/2 | | | Maria Magoun, Thousand Oaks CA; Eleanor Sanes, Westlake Vlg CA 63.00 |
| 0.95 | 3 | | | Ann Carlson - Carol Fredlund, Minneapolis MN 62.00 |
| 0.71 | 4 | | | Rose Hand, Torrance CA; Ann Keen, Sarasota FL 56.00 |
| 0.86 | | 2/3 | | Marcia Hatfield, Westerville OH; Linda Rice, Worthington OH 53.50 |
| 0.91 | | 2/3 | 1 | Toy Uchizono - Hiro Sasaki, Henderson NV 53.50 |
| 0.68 | | | 2 | Sara Kuperstein - Hortensia Azerraf, Caracas VZ 51.00 |

FAREWELL CONSOLATION KNOCKOUTS

| | |
|-----------|---|
| Bracket 1 | 8 Teams |
| 9.47 | 1 David Rosenberg, Jackson Heights NY; Stephen Shane, White Plains NY; Eugene Davidson, Washington DC; Robert Heitzman Jr, Suffern NY |
| 7.10 | 2 Carol Simon, Las Vegas NV; Simon Satanovsky, Irvington NY; Don Nemiro, Hollister CA; Hendrik Sharples, Portland OR |
| 5.21 | 3 Gary Soules, Campbell CA; Steven Kirshenbaum, Burlingame CA; Mark Ralph, San Francisco CA; J Peter Franks, Sausalito CA |

| | |
|-----------|---|
| Bracket 2 | 8 Teams |
| 8.97 | 1 Yas Takeda, Hacienda Hgts CA; Larry Gilbert, Burien WA; Sorin Samanta, Rochester MN; Brian Gilbert, Irvine CA |
| 6.73 | 2 Geo. Fred Williams III - Shirley Leeds, Knoxville TN; Jim Relihan, Tampa FL; Robert Rinehart, Northumberland PA |
| 4.93 | 3 Jason Feldman - Lynne Feldman, Champaign IL; Chris Lubesnik, Glendale CA; Lisa Liberati, Los Angeles CA |

| | |
|-----------|---|
| Bracket 3 | 8 Teams |
| 8.22 | 1 Allen McRae, Portland ME; Bob Lafleur, Las Vegas NV; Johanna Blackwell - Reece Blackwell, Greenville SC |

| | |
|-----------|--|
| Bracket 4 | 8 Teams |
| 7.48 | 1 Ron Grove, Sherwood Park AB; Simon Farrer, Calgary AB; Paula Nowlan, Edmonton AB; Glenna Shannahan, Fitchburg WI |

| | |
|------|--|
| 5.61 | 2 Perrie Kay Avery - Robley Mangney, Cheyenne WY; Ardy McLeod, Apache Jct AZ; Audrey Ochs, Hamilton MT |
|------|--|

| | |
|------|---|
| 4.11 | 3 Brenda Simpson - Kris Motoyoshi, Spokane WA; Anne Wicks, Redmond WA; Jacqueline Jauregui, Issaquah WA |
|------|---|

| | |
|-----------|--|
| Bracket 5 | 8 Teams |
| 6.98 | 1 Bill McClean - Betty Curtis, Pacific Plsds CA; V Mallery, St George UT; Teddy Scott, Saint George UT |

| | |
|------|--|
| 5.24 | 2 Byron Crittenden, Kingswood Surre Y; James Bochsler, Davenport FL; Sandra Hammer, Dedham MA; Courtney Nelson, Wells VT |
|------|--|

| | |
|------|---|
| 3.84 | 3 John Cox, Kellogg ID; Monta Bell - Ernest Olness Jr - Lloyd Fetsch, Billings MT |
|------|---|

| | |
|-----------|--|
| Bracket 6 | 8 Teams |
| 6.23 | 1 Mac Busby, San Diego CA; Grant Peacock, Irvine CA; Bert Koslen, Marina del Rey CA; Lorraine Bagdasarian, Santa Monica CA |

| | |
|-----------|---|
| Bracket 7 | 8 Teams |
| 5.06 | 1 Gordon Plumb - Monika Plumb, Carbondale IL; Karen Coe - John Coe, Benton IL |

| | |
|------|---|
| 3.80 | 2 Claire Simpson - Emmy Lou McGraw, Honolulu HI; Ann (Nancy) Riely, Kailua Kona HI; June Lucas, Reno NV |
|------|---|

| | |
|------|--|
| 2.78 | 3 Cynthia Keaton, Coppell TX; M. O. Crawford, Dallas TX; Sheila Nickerson - Joseph Bussen, Kailua HI |
|------|--|

| | |
|-----------|---|
| Bracket 8 | 7 Teams |
| 3.91 | 1 Ruth Bowser, Schererville IN; Patricia Trethewey, Chesterton IN; Donna Kellerman, Imperial CA; Shirley Peddicord, Hobart IN |

| | |
|------|---|
| 2.93 | 2 Kenneth Kaufman - J J Armour, Derwood MD; Mark Steele - Donia Steele, Livingston TX |
|------|---|

| | |
|------|--|
| 2.15 | 3 William West, Yuma AZ; Wayne Syms, Olds AB; Alice Thomas - Gary Thomas, Langley BC |
|------|--|

| | |
|-----------|---|
| Bracket 9 | 6 Teams |
| 3.37 | 1 Anna Cormier, Pinellas Park FL; Erica Artus - Lyn Giuffrida, Vero Beach FL; Doris Houdesheldt, St Petersburg FL |

| | |
|------|---|
| 2.53 | 2 John Fuller - Arlene Fuller, Mesa AZ; C. Sue Mason - Ernest Mason, Gold Canyon AZ |
|------|---|



Low Country Classic MABC Regional • Hilton Head Island, South Carolina

February 4-10, 2002

Marriott Beach & Golf Resort (formerly Hyatt Regency)

Oceanfront at Palmetto Dunes • Reserve Early (843) 686-8400
 Bridge Rate: \$84 (Cut-off Date January 7)
 Details in the November Bridge Bulletin
 Chair: Pat Seiler (843) 681-8264 PS793@aol.com

Join us for a gala week on this semi-tropical island paradise.
 Great bridge competition — Newcomer, Senior and Knockout Events
 ACCLAIMED FOR OUR WARM, FRIENDLY ATMOSPHERE
 Visit the MABC on the web: www.mabc.org

2ND MONDAY MORNING SIDE PAIRS

| | | | NORTH-SOUTH | SECTION MM | EAST-WEST | | | |
|-----|---|---|---|------------|-----------|-----|---|--------|
| A | B | C | | A | B | C | | |
| 1 | 1 | 1 | Susan Ohlfest, Phoenix AZ; Richard Hunt, Scottsdale AZ | 99.50 | 1 | | Jill Wooldridge, Buffalo NY; Deborah Drury, Vero Beach FL | 105.50 |
| 2 | 2 | | Paul Sensmeier - Susie Sensmeier, Yorktown VA | 91.50 | 2 | | R Bruce Martin, Paia HI; Merle Stetser, Honolulu HI | 99.00 |
| 3 | 3 | | Hal Hindman, Fairfax VA; Mitchell Karlick, Herndon VA | 90.50 | 3 | | Kirt Robins - Teddy Robins, Asheville NC | 90.00 |
| 4 | | | Fred Schenker, Pittsburgh PA; Amal Dasgupta, Wilmington DE | 89.50 | 4 | 1 | Doris Segar, Newport Beach CA; Elaine Prager, New Orleans LA | 85.50 |
| | | | | | | 2/3 | Rosalie Traster - Tony Traster, Brooklyn NY | 83.00 |
| | | | | | | 2/3 | Maria Abbott, San Francisco CA; Della Willis, Las Vegas NV | 83.00 |
| | | | NORTH-SOUTH | SECTION NN | EAST-WEST | | | |
| A | B | C | | A | B | C | | |
| 1 | | | Toshiko Yingst - Bonnie Bagley, Colorado Spgs CO | 94.50 | 1 | | Bob Cole, Bethlehem PA; Raymond Raskin, King of Prussia PA | 104.00 |
| 2 | | | Wally Augustin - Jone Augustin, San Diego CA | 93.50 | 2 | | Barrett Raff, Johnson City NY; Henry Bethe, Ithaca NY | 102.50 |
| 3 | 1 | | Dan Durham, Las Vegas NV; Elizabeth Jameson, Central UT | 92.00 | 3 | | Kelley Hwang, New York NY; Walter Dedio, Morden MB | 88.00 |
| 4 | 2 | | Dewitt Hudson Jr - Elizabeth Hudson, Arlington TX | 90.00 | 4 | 1 | J Caldwell, Lewisville TX; Michael Lombardi, Norman OK | 85.50 |
| | | 1 | Kay Johnson, Minneapolis MN; Shirley Rosenblum, Burnsville MN | 88.50 | | 2 | Deanna Goh, Peterborough ON; Peter Morse, North Vancouver BC | 83.50 |
| | | | NORTH-SOUTH | SECTION OO | EAST-WEST | | | |
| A | B | C | | A | B | C | | |
| 1 | | | Bud Biswas, Lexington MA; Stewart Mackeigan, Wilmington MA | 98.50 | 1 | | Tom Wylie, Woodland Hills CA; Gilbert Stinebaugh, Van Nuys CA | 105.50 |
| 2 | 1 | | Josephine Grabow, Helotes TX; Mona Mao, Springfield OH | 96.50 | 2 | 1 | Larry Barr, Austin TX; Roberto Verthelyi, New York NY | 95.00 |
| 3 | 2 | | Ahmed Sorathia, Chino CA; Jeff Strutzel, Redondo Beach CA | 96.00 | 3/4 | 2 | Carole Chiang - Chao-Wang Chiang, Rapid City SD | 94.50 |
| 4/5 | | | Ellen Anten, Encino CA; Steve Gross, Westlake Vlg CA | 92.00 | 3/4 | | Charles Clickner, Clearwater FL; Mary Dzacky, Palm Harbor FL | 94.50 |
| 4/5 | 3 | 1 | Irwin Meisler, Houston TX; Lowell Porter, Saint Louis MO | 92.00 | | 3 | Larry Silver - Christine Silver, San Francisco CA | 91.50 |
| | | 2 | Michael Nabrynski - Jennifer Nabrynski, Ashland MA | 81.50 | | | | |

2ND MONDAY MORNING 300/200/50 PAIRS

| | | | NORTH-SOUTH | SECTION QQ | EAST-WEST | | | | |
|-----|---|---|---|-------------|-----------|---|---|---|-------|
| A | B | C | | A | B | C | | | |
| 1 | 1 | | Bob Blackledge - William Nabors, Colorado Spgs CO | 97.50 | 1 | 1 | Nancy Jansen - Donna Thorne, Henderson NV | 108.50 | |
| 2 | 2 | | Karen Thiel, Shellbrook SK; Eleanor Calder, Stenen SK | 93.50 | 2 | 2 | Barbara Chang - Colin Chang, Arlington TX | 101.50 | |
| 3 | 3 | | James Fallis - Alice Fallis, Wichita KS | 92.00 | 3 | 3 | M Fierman - Helene Fierman, Encino CA | 90.00 | |
| 4/5 | | | Stephanie White - Richard Weigle, Albuquerque NM | 91.50 | 4 | 4 | Jane Ettelson - Charles Ettelson, Saint Louis MO | 88.00 | |
| 4/5 | 4 | 1 | Sara Kuperstein - Hortensia Azerraf, Caracas VZ | 91.50 | 5 | | Peggy Ellis - LouAnn O'Sullivan, New York NY | 84.50 | |
| | | | NORTH-SOUTH | SECTION RRR | EAST-WEST | | | | |
| A | B | C | | A | B | C | | | |
| 1 | 1 | | James Tonjes - Jean Tonjes, Espanola NM | 104.50 | 1 | | Richard Plattner - Donald Howell, Carlsbad CA | 91.00 | |
| 2 | 2 | 1 | Jacqueline Williams - Darrell Williams, Littleton CO | 103.50 | 2 | 1 | Terry Martin, Parkside SK; Thomas Morton, Pittsburgh PA | 89.00 | |
| 3 | | | Robert Edwards - Vivian Edwards, Palm Beach Gdns FL | 101.00 | 3 | 2 | 1 | Dilip Maniar, Mentor OH; Rose Hand, Torrance CA | 88.50 |
| 4 | | | Michael Deegan, Arlington VA; Renato Robledo, Philadelphia PA | 88.00 | 4/5 | 3 | | Frank Hansen - Kathryn Hansen, Henderson NV | 88.00 |
| 5 | 3 | | Maurice Tatelman - Lois Tatelman, Phoenix AZ | 87.00 | 4/5 | | | Neil Hunter - Anita Carlson, Santa Fe NM | 88.00 |
| | | 4 | Richard Westphal, Albuquerque NM; Gary Shepley, Houston TX | 85.50 | | | | | |
| | | 2 | Carol Weiser, Albuquerque NM; Jana George, Rio Rancho NM | 81.00 | | | | | |

2ND MONDAY STRATIFIED SENIOR PAIRS 1ST SESSION

| | | | NORTH-SOUTH | SECTION FFF | EAST-WEST | | | | |
|-----|-----|---|---|-------------|-----------|-----|---|--|--------|
| A | B | C | | A | B | C | | | |
| 1 | | | Loren Hawkins, Bremerton WA; Ken Kirkpatrick, South Colby WA | 215.80 | 1 | 1 | Cynthia Glad - Don Glad, Seattle WA | 184.00 | |
| 2 | | | Nada Sundermeyer - Clay Sundermeyer, Bellevue WA | 194.04 | 2 | | Sharon Bialek - Norm Bialek, Sun City West AZ | 183.83 | |
| 3 | | | R Craig Hemphill - Nancy Mitchell, Jacksonville FL | 188.33 | 3 | 2 | John Harpoolian, Menlo Park CA; Robert Ipswitch, San Mateo CA | 183.17 | |
| 4 | | | Pushpa Jain, Ottawa ON; Anne Thain, Bradenton FL | 175.54 | 4 | | Vivian Leggett, Waller TX; Ron Woodsum, Houston TX | 176.04 | |
| 5 | 1 | 1 | Edward Pickus, Libertyville IL; Thomas Morgan, Zion IL | 153.46 | 5 | 3 | Marlene Mandell - Seymour Mandell, Southfield MI | 158.96 | |
| 6 | 2 | | Bea Bahr - Chet Bahr, Rochester MN | 151.71 | 6 | | Lois Schmied - Tom Schmied, Littleton CO | 157.67 | |
| | | 3 | Nina Hobbs - Peggy Hardcastle, Fort Worth TX | 150.33 | | 1 | Susan West - Lorallan Hushbeck, Salem OR | 148.67 | |
| | | | NORTH-SOUTH | SECTION GGG | EAST-WEST | | | | |
| A | B | C | | A | B | C | | | |
| 1 | | | Jerry Pietscher, Elk Grove CA; Ted Alexander, Laguna Hills CA | 190.00 | 1 | 1 | William Meyer - Ralph Aguado, Las Vegas NV | 201.50 | |
| 2 | 1 | 1 | Betty Fessett - Don Fessett, Springville CA | 185.00 | 2 | | Eddie Rose, Laguna Niguel CA; Jean Hume, Livermore CA | 185.50 | |
| 3 | | | Rollie Armacost - Darlene Armacost, Wolf Creek MT | 180.50 | 3/4 | 2 | 1 | Fran Wakely - David Wakely, Belleair FL | 184.00 |
| 4 | | | Charles Perez, Salem OR; Dave Kruse, Lakehead CA | 173.50 | 3/4 | | | Robert Boggs, Roseville CA; Nancy Wilson, Sacramento CA | 184.00 |
| 5/6 | 2/3 | | Chet Young, Alameda CA; Lois Low Tan, San Francisco CA | 163.50 | 5 | | | Patsy Lum, Honolulu HI; Charles Pan, Chevy Chase MD | 166.00 |
| 5/6 | 2/3 | | Evie Leathers - Otis Leathers, McCleary WA | 163.50 | 6 | | | Carlos Munoz - Kassie Ohtaka Munoz, White Plains NY | 152.50 |
| | | 2 | Mary Henry, Boise ID; J Horsley, Eagle ID | 148.00 | | 3/4 | | Yolanda Kristiansen - K Kristiansen, Clearwater FL | 150.50 |
| | | | | | | 2 | | Beverly Hughes - Jay Hughes, Moreno Valley CA | 150.50 |
| | | | | | | 3/4 | | C Goodman - Robert Goodman, Jupiter FL | 136.00 |
| | | | NORTH-SOUTH | SECTION HHH | EAST-WEST | | | | |
| A | B | C | | A | B | C | | | |
| 1 | | | Barbara Noble, Paradise Valley AZ; Jerry Gaer, Scottsdale AZ | 187.00 | 1 | | | Yoshiyuki Nakamura - Haruko Koshi, Tokyo JP | 204.00 |
| 2 | 1 | | George Saffeeles, Las Vegas NV; Eugene Barrack, Township Of Was NJ | 169.00 | 2 | | | Mike Aliotta, Oklahoma City OK; John Pataki, Mesquite TX | 180.50 |
| 3 | | | Jack Bastian, Haddonfield NJ; Marie Trethaway, Cherry Hill NJ | 168.50 | 3 | 1 | 1 | Richard Banks, Oakdale CA; Olivia Althouse, Sonora CA | 176.00 |
| 4/5 | 2 | 1 | Edward Brass - Ruth Brass, S Burlington VT | 166.50 | 4 | 2 | | Joan Mesias, Temple City CA; Barbara Swan, Roseville CA | 171.50 |
| 4/5 | | | Veronica McMurdie - John McMurdie, Sacramento CA | 166.50 | 5/6 | 3 | | Barbara Carter - Katherine Stanton, Oakville ON | 162.00 |
| 6 | | | Shirley Stanton, Houston TX; Ruth Salisbury, Fullerton CA | 160.50 | 5/6 | | | George Drake - Helene Drake, Phoenix AZ | 162.00 |
| | | 3 | M Morgan - H Morgan Jr, Virginia Beach VA | 159.00 | | | | | |
| | | | NORTH-SOUTH | SECTION III | EAST-WEST | | | | |
| A | B | C | | A | B | C | | | |
| 1 | | | Jacqueline Karlen, Las Vegas NV; Ernest Inada, Henderson NV | 208.00 | 1 | | | Phil Leon, Grosse Pointe MI; Edward White, Grand Blanc MI | 182.50 |
| 2 | | | Lowell Andrews, Huntington Bch CA; Bettie Messer-Heldring, Escondido CA | 183.00 | 2 | | | Ronald Schick - Joy Miller Schick, Naples FL | 181.00 |
| 3 | | | Trudy Cohen - Calvin Cohen, Monticello NY | 177.00 | 3 | 1 | | Rob Thomason, Seattle WA; John Robinson, Bothell WA | 171.00 |
| 4 | 1 | | Della Palmer, Wasilla AK; Barbara Keller, Juneau AK | 172.50 | 4 | 2 | | Barbara Kallaus, Las Vegas NV; Virginia Lewis, Kailua HI | 170.50 |
| 5 | 2 | | Carol Robey - Alice Flynn, Roanoke VA | 166.50 | 5 | 3 | 1 | Gino Scalamandre - Katie Scalamandre, New York NY | 168.00 |
| 6 | | | Barat Shah - Lynne Shah, Plant City FL | 160.50 | 6 | 4 | | Joanne Euler - Samuel Orandle, Las Vegas NV | 157.00 |
| | | 3 | Elaine Potash, Atlantic City NJ; Marianne Goff, Margate City NJ | 154.00 | | | 2 | Ruth Wiener - George Stull, Las Vegas NV | 150.50 |
| | | 1 | T P Goyal - David Weingarten, Las Vegas NV | 147.00 | | | | | |
| | | | NORTH-SOUTH | SECTION SSS | EAST-WEST | | | | |
| A | B | C | | A | B | C | | | |
| 1 | | | Steven Haver, Phoenix AZ; Vivian Chrom, Toronto ON | 187.88 | 1 | | | Robert Donaldson, Ogden UT; Diana Barber, Bozeman MT | 184.05 |
| 2 | | | Martin Steinberg, Bloomington IL; Joan Asheroff, Bethpage NY | 186.38 | 2 | | | P Mallela, Dekalb IL; John Currie, Halifax NS | 178.00 |
| 3 | | | John Lu, Los Angeles CA; Martha Orloff, Santa Monica CA | 180.00 | 3 | 1 | | Ann Cressman, Laguna Niguel CA; Beverly Cochran, Corona del Mar CA | 177.21 |
| 4 | 1 | | William Alexander, Ramsey NJ; Arnold Bergen, Oakland NJ | 174.91 | 4 | 2 | | Barbara Glazerman, Newton MA; Shirleen Ellsworth, Kansas City MO | 171.62 |
| 5 | | | Florence Ludwig, Brunswick ME; Rosemarie Goodwin, Lewiston ME | 173.62 | 5 | 3 | | Stella Blodinger - Jack Blodinger, Boca Raton FL | 167.30 |
| 6 | | | Frank Jackson, Pacifica CA; Antoni Baranski, San Carlos CA | 164.04 | 6 | | | Millie Williamson, Arcadia CA; Mary Terell, Albuquerque NM | 166.50 |
| | | 2 | Jane Hopkins, Denton TX; Hai Thi Gates, Arlington TX | 163.91 | | | | | |
| | | 3 | Suzanne Waxman, Needham MA; Nancy O'Donnell, East Greenwich CT | 162.00 | | | | | |
| | | 4 | Madhusudan Patel, Lewisville TX; Louis Auguste, Port- Au - Prin CE | 159.66 | | | | | |
| | | | NORTH-SOUTH | SECTION EEE | EAST-WEST | | | | |
| A | B | C | | A | B | C | | | |
| 1 | 1 | | Sue Frishberg, West Hollywood CA; Mary Olivier, Santa Monica CA | 212.79 | 1/2 | | | Alan Darman, Boca Raton FL; William Vinson, Delray Beach FL | 183.50 |
| 2 | | | Bill Meltzer - Sandra Tuft, Las Vegas NV | 195.50 | 1/2 | | | Joyce Stone, Denton TX; Larue Stott, Dallas TX | 183.50 |
| 3 | | | Barbara Fellows - James Fellows, Omaha NE | 190.08 | 3 | | | William Hamann - Anne Hamann, Riverside CA | 178.50 |
| 4 | | | Ernest Gray, Silver Spring MD; Jack Armstrong, Falls Church VA | 181.29 | 4 | | | John Gustafson - Helen Gustafson, Des Moines IA | 173.50 |
| 5 | 2 | 1 | Oewana Lowe, Fall City WA; Allen Whipple, Seattle WA | 170.21 | 5 | | | Susan Abrams - Norm Rosen, Sun City West AZ | 171.00 |
| 6 | | | Geraldine Chavez - J David King, Miami Beach FL | 164.42 | 6 | 1 | 1 | Gerry Adlman, Larchmont NY; Margaret Alan, White Plains NY | 169.00 |
| | | 3 | Phyllis Zimmerman, Warren MI; Carol Neef, Grosse Pointe MI | 164.20 | | 2 | | Frieda Scott - Chieko Farrell, Lakewood WA | 152.00 |
| | | 4 | Glenda Lewis, Boynton Beach FL; Jim Cohen, Boca Raton FL | 143.96 | | 3 | 2 | Robert Pagliarulo, Roslindale MA; Charles Djerf, Quincy MA | 145.50 |
| | | 2 | Mary Oztemel, Key Biscayne FL; Ellen Elser, Raleigh NC | 137.00 | | | | | |
| | | | NORTH-SOUTH | SECTION JJJ | EAST-WEST | | | | |
| A | B | C | | A | B | C | | | |
| 1 | | | Joerg Schneider, Vancouver BC; Dorothy Carnegie, White Rock BC | 195.50 | 1 | | | John Bralliar - Bea Bralliar, Lomita CA | 170.00 |
| 2 | | | Elaine Ware, Vernon BC; Larry Graft, Roseville CA | 194.00 | 2 | | | Cynthia Michael, Woodbridge CT; Sarah Corning, Guilford CT | 168.50 |
| 3 | | | Denese Hinde - Richard Hinde, Irving TX | 169.00 | 3 | 1 | 1 | Donna Magrill - Doris Turner, Grand Rapids MI | 164.00 |
| 4 | 1 | | John Dockray - Edie Dockray, Villanova PA | 168.50 | 4 | 2 | 2 | Francis Shorey, Bailey Island ME; John Bush, Ketchum ID | 161.00 |
| 5 | | | Marilou Powell, Round Rock TX; Lois Goodman, Austin TX | 163.50 | 5 | 3 | | Frances Milam - Nancy Goulet, El Paso TX | 160.00 |
| 6 | | | Genevieve Hewitt - Richard Hewitt, New York NY | 161.00 | 6/8 | | | Dorothy Perlman Pullan - Dan McCaw, Toronto ON | 159.50 |
| | 2 | | Laverne Marano, San Juan Capo CA; Kaye Amdon, Orange CA | 157.00 | 6/8 | | | Sally Fahland, Veradale WA; Lucien Stratton, Boise ID | 159.50 |
| | 3/4 | | John Vanderveen, Seal Beach CA; Edie Wong, San Francisco CA | 156.00 | 6/8 | 4 | | Natalie Weintraub, Brigantine NJ; Beatrice Siegel, Linwood NJ | 159.50 |
| | 3/4 | 1 | Louise Connell - Margaret Chappell, Grand Rapids MI | 156.00 | | | | | |
| | | 2 | Coline Maclean, Los Gatos CA; Edward Sutcliffe, Sonoma CA | 148.00 | | | | | |

2ND MONDAY MORNING SIDE PAIRS

| | | | NORTH-SOUTH | SECTION MM | EAST-WEST | | | |
|---|---|---|--|------------|-----------|-----|--|--------|
| A | B | C | | A | B | C | | |
| 1 | 1 | 1 | Susan Ohlfest, Phoenix AZ; Richard Hunt, Scottsdale AZ | 99.50 | 1 | | Jill Wooldridge, Buffalo NY; Deborah Drury, Vero Beach FL | 105.50 |
| 2 | 2 | | Paul Sensmeier - Susie Sensmeier, Yorktown VA | 91.50 | 2 | | R Bruce Martin, Paia HI; Merle Stetser, Honolulu HI | 99.00 |
| 3 | 3 | | Hal Hindman, Fairfax VA; Mitchell Karlick, Herndon VA | 90.50 | 3 | | Kirt Robins - Teddy Robins, Asheville NC | 90.00 |
| 4 | | | Fred Schenker, Pittsburgh PA; Amal Dasgupta, Wilmington DE | 89.50 | 4 | 1 | Doris Segar, Newport Beach CA; Elaine Prager, New Orleans LA | 85.50 |
| | | | | | | 2/3 | Rosalie Traster - Tony Traster, Brooklyn NY | 83.00 |
| | | | | | | 2/3 | Maria Abbott, San Francisco CA; Della Willis, Las Vegas NV | 83.00 |

2ND MONDAY DAYLIGHT OPEN PAIRS 1ST SESSION

| | | | NORTH-SOUTH | SECTION KKK | EAST-WEST | | | | |
|---|---|---|--|-------------|-----------|---|---|--|--------|
| A | B | C | | A | B | C | | | |
| 1 | | | Howard Pilch, Andover MA; Alan Boston, Las Vegas NV | 131.50 | 1 | | | Philip Altus - Muriel Altus, Tampa FL | 126.00 |
| 2 | | | Donna Marshall - David Marshall, Reading MA | 129.50 | 2 | | | Ken Bloom, Acton MA; Bill Irvine, Quincy MA | 122.50 |
| 3 | | | Marion Robertson, San Francisco CA; Bill McIntosh, Gilroy CA | 123.50 | 3 | | | Ross Robbins, Port Isabel TX; Bryce Troyer, Joliet IL | 122.00 |
| 4 | | | Joan Klap - Shirley Tartick, Toronto ON | 113.50 | 4 | 1 | | Gil Mahla, Hartwell GA; Jim Cheney, Hilo HI | 119.50 |
| 5 | 1 | | Judy Hummel - Jerry Curtright, Colorado Spgs CO | 112.00 | 5 | 2 | 1 | Lawrence Schell, Weymouth MA; Bill Campbell, Henderson NV | 108.00 |
| | | 1 | David McIntyre - Tracey King, Oak Park MI | 109.50 | | 3 | 2 | Kurt Poci, San Francisco CA; Andrew Hanes, Provincetown MA | 106.00 |
| | | 3 | Joe Cote, Edmonton AB; Gloria Allan, West Vancouver BC | 106.00 | | | | | |
| | | | NORTH-SOUTH | SECTION LLL | EAST-WEST | | | | |
| A | B | C | | A | B | C | | | |
| 1 | | | Bob Bratcher, Vista CA; Derald Keetch, Fort Worth TX | 130.00 | 1 | | | Larry Rabideau, Saint Anne IL; Al Levering, Frankfort IL | 123.50 |
| 2 | | | Voy | | | | | | |

| | | | NORTH-SOUTH | SECTION V | EAST-WEST | | |
|---|---|---|---|-----------|-----------|---|--------|
| A | B | C | A | B | C | | |
| 1 | 1 | 1 | Mary Boyd - David Shepler, Charleston WV | 129.50 | 1 | Brian Ellis, Twinsburg OH; Bruce Keidan, Pittsburgh PA | 144.00 |
| 2 | 2 | 2 | Al Bongarzzone - Judy Bongarzzone, Oak Park CA | 125.00 | 2 | 1 Michel Carriere, Saint-Bruno PQ; Gilbert Lambert, White Rock BC | 139.00 |
| 3 | | | Doug Couchman, N Richland Hls TX; William White, Arlington TX | 124.00 | 3 | Stephanie Haddy, Scottsdale AZ; Daniel Coughenour, Phoenix AZ | 116.50 |
| 4 | 3 | | Ranjan Bhaduri, Dundas ON; Raymond Jung, Hamilton ON | 123.00 | 4 | 2 Rhoda Nussbaum, Edison NJ; Leo Rosenbluth, New York NY | 116.00 |
| 5 | | | Claudia Elmes, Pasadena CA; Karen Arase, La Canada CA | 120.00 | 5 | 3 Suzi Hutchinson - David Walton, Thousand Oaks CA | 112.50 |
| | | | | | | 1 Joan Jacobson, Centerville MA; Paul Costantino, Rock Springs WY | 109.00 |
| | | | | | | 2 Phyllis Seeder, Granada Hills CA; Geri Loman, Tarzana CA | 103.50 |

2ND MONDAY SENIOR PAIRS AFTERNOON SESSION

| | | | NORTH-SOUTH | SECTION EEE | EAST-WEST | | |
|---|---|---|--|-------------|-----------|--|--------|
| A | B | C | A | B | C | | |
| 1 | 1 | | Francis Shorey, Bailey Island ME; Shirley West, Brunswick ME | 192.00 | 1 | Barbara Fellows - James Fellows, Omaha NE | 195.00 |
| 2 | 2 | | Gail Levy, Melville NY; Reisha Berkowsky, Huntingtn Sta NY | 183.00 | 2 | Ernest Gray, Silver Spring MD; Jack Armstrong, Falls Church VA | 181.00 |
| 3 | | | Jerome Zimmerman, South Palm Be FL; Andy O'Grady, Miami FL | 182.50 | 3 | 1 Frieda Scott - Chieko Farrell, Lakewood WA | 178.00 |
| 4 | 3 | | Madhusudan Patel, Lewisville TX; Louis Auguste, Port- Au - Prin CE | 168.00 | 4 | Gertrude Ebesu - Maizie Ho, Honolulu HI | 173.00 |
| 5 | 4 | 1 | Norvel Ray - Michael Peruscini, Las Vegas NV | 162.50 | 5 | William Hamann - Anne Hamann, Riverside CA | 172.00 |
| 6 | | | Ruth Nussdorf, Old Westbury NY; Judith Gushner, Boca Raton FL | 155.50 | 6 | 2 Geraldine Chavez - J David King, Miami Beach FL | 167.50 |
| | | | | | | 3 David Kaplan - Maralin Morgan, Delray Beach FL | 166.50 |
| | | | | | | 1 Bill Morrison - Susy Morrison, Bartlesville OK | 154.50 |
| | | | | | | 2 Martha Bacon - Edward Bacon, Las Cruces NM | 148.00 |
| | | | | | | 1 Marilyn Askin - Frank Askin, West Orange NJ | 145.50 |

| | | | NORTH-SOUTH | SECTION FFF | EAST-WEST | | |
|---|---|---|---|-------------|-----------|---|--------|
| A | B | C | A | B | C | | |
| 1 | | | Yoshiyuki Nakamura - Haruko Koshi, Tokyo JP | 218.00 | 1 | Vivian Leggett, Waller TX; Ron Woodsum, Houston TX | 192.00 |
| 2 | | | Sheila Bleiman - Jim Woodside, Sun City West AZ | 201.50 | 2 | Antonia Okany, Etobicoke ON; Judy Singer, Scarborough ON | 187.00 |
| 3 | | | Jack Bastian, Haddonfield NJ; Marie Trethaway, Cherry Hill NJ | 194.50 | 3 | Nada Sundermeyer - Clay Sundermeyer, Bellevue WA | 179.00 |
| 4 | | | Mike Aliotta, Oklahoma City OK; John Pataki, Mesquite TX | 172.50 | 4 | 1 Nina Hobbs - Peggy Hardcastle, Fort Worth TX | 177.00 |
| 5 | | | George Drake - Helene Drake, Phoenix AZ | 170.00 | 5 | Joseph Pennario, del Mar CA; Bette Cornelius, La Jolla CA | 174.00 |
| 6 | 1 | 1 | Janet Rhoden - Theresa Palmer, Las Vegas NV | 162.00 | 6 | Lois Schmied - Tom Schmied, Littleton CO | 157.00 |
| | 2 | | Kent White, Lincoln CA; Elizabeth Shirai, Roseville CA | 160.00 | 2 | Henry Daley, Weymouth MA; F Donna Fedor, Bridgewater MA | 154.50 |
| | 3 | | R Fieler, Boca Raton FL; Jean Troyer, Joliet IL | 148.00 | 3 | 1 Edward Pickus, Libertyville IL; Thomas Morgan, Zion IL | 149.50 |
| | | | | | | 4 Arlene McIntosh, North Reading MA; Alan Walters, Cape Porpoise ME | 146.50 |
| | | | | | | 2 Ron Woofler - Lorene Hall, Bowling Green OH | 143.00 |

| | | | NORTH-SOUTH | SECTION GGG | EAST-WEST | | |
|---|---|---|---|-------------|-----------|---|--------|
| A | B | C | A | B | C | | |
| 1 | | | Liane Turner - Donald Turner, Muskegon MI | 185.50 | 1 | Jamie Steen - Mac Steen, Bellevue WA | 181.50 |
| 2 | | | Pushpa Jain, Ottawa ON; Anne Thain, Bradenton FL | 184.50 | 2/4 | 1 Mary Henry, Boise ID; J Horsley, Eagle ID | 174.00 |
| 3 | | | Leonard Pennario, Los Angeles CA; Anne Terry, La Jolla CA | 177.50 | 2/4 | Robert Boggs, Roseville CA; Nancy Wilson, Sacramento CA | 174.00 |
| 4 | 1 | | Cynthia Glad - Don Glad, Seattle WA | 175.00 | 2/4 | Joan Ivey - Ernie Ivey, Santa Maria CA | 174.00 |
| 5 | 2 | | Bernard Karlen - Antone Walloch, Las Vegas NV | 174.50 | 5 | Jerry Pietscher, Elk Grove CA; Ted Alexander, Laguna Hills CA | 173.00 |
| 6 | 3 | | John Harpothian, Menlo Park CA; Robert Ipswitch, San Mateo CA | 169.50 | 6 | 2 Evie Leathers - Otis Leathers, Mc Cleary WA | 165.00 |
| | | 1 | Susan West - Lorallan Hushbeck, Salem OR | 118.50 | 3 | Chet Young, Alameda CA; Lois Low Tan, San Francisco CA | 164.50 |
| | | | | | | 2 Kay Swanson, Freeport IL; Erma Thompson, Warren IL | 151.50 |

| | | | NORTH-SOUTH | SECTION HHH | EAST-WEST | | |
|-----|---|---|--|-------------|-----------|--|--------|
| A | B | C | A | B | C | | |
| 1 | | | Carlos Munoz - Kassie Ohtaka Munoz, White Plains NY | 207.00 | 1 | 1 Joan Mesias, Temple City CA; Barbara Swan, Roseville CA | 182.00 |
| 2 | 1 | | Beverly Hughes - Jay Hughes, Moreno Valley CA | 178.50 | 2 | 2 M Morgan - H Morgan Jr, Virginia Beach VA | 176.50 |
| 3 | 2 | | William Meyer - Ralph Aguado, Las Vegas NV | 178.00 | 3 | Veronica McMurdie - John McMurdie, Sacramento CA | 174.00 |
| 4 | | | Nancy Mandel, Mequon WI; Bernice Larson, Greenfield WI | 169.50 | 4 | Barbara Noble, Paradise Valley AZ; Jerry Gaer, Scottsdale AZ | 171.00 |
| 5 | | | Ann Ottenberg, Soquel CA; Jane Basilio, Santa Cruz CA | 165.00 | 5 | William August, Palm Beach FL; Harriet Zimmerman, South Palm Be FL | 168.00 |
| 6/8 | 3 | 1 | Fran Wakely - David Wakely, Belleair FL | 164.50 | 6 | 3 Mary Lou Kiley, Mooresville NC; Philip Pearl, Fountain Valley CA | 162.50 |
| 6/8 | | | Eddie Rose, Laguna Niguel CA; Jean Hume, Livermore CA | 164.50 | | | |
| 6/8 | | | Patsy Lum, Honolulu HI; Charles Pan, Chevy Chase MD | 164.50 | | | |
| | 2 | | Lucille Y Wong - Daniel Wong, Honolulu HI | 134.00 | | | |

| | | | NORTH-SOUTH | SECTION III | EAST-WEST | | |
|---|---|---|--|-------------|-----------|---|--------|
| A | B | C | A | B | C | | |
| 1 | | | Cynthia Michael, Woodbridge CT; Sarah Corning, Guilford CT | 184.00 | 1 | Hamish Bennett, Menlo Park CA; Dan Voorhies, Windsor CA | 180.00 |
| 2 | | | Sally Fahland, Veradale WA; Lucien Stratton, Boise ID | 183.50 | 2 | Burt Kifer, Arlington TX; Roy Falck, Livingston TX | 179.50 |
| 3 | | | Millie Williamson, Arcadia CA; Mary Terrell, Albuquerque NM | 178.00 | 3 | Barat Shah - Lynne Shah, Plant City FL | 178.00 |
| 4 | 1 | | Constance Hrabchak, Watertown NY; Robert Lau, Dunedin FL | 167.50 | 4 | John Measures, Nepean ON; Pat Samuels, Osprey FL | 172.00 |
| 5 | 2 | | John Vanderveen, Seal Beach CA; Edie Wong, San Francisco CA | 161.50 | 5 | 1 T P Goyal - David Weingarten, Las Vegas NV | 167.00 |
| 6 | 3 | | Heinz Grunewald, San Diego CA; Mort Frishberg, West Hollywood CA | 161.00 | 6 | 2 Gino Scalամandre - Katie Scalամandre, New York NY | 165.50 |
| | 4 | | Frances Milam - Nancy Goulet, El Paso TX | 160.50 | 3 | Elaine Potash, Atlantic City NJ; Marianne Goff, Margate City NJ | 163.00 |
| | | 1 | Natalie Weintraub, Brigantine NJ; Beatrice Siegel, Linwood NJ | 139.50 | | | |

| | | | NORTH-SOUTH | SECTION JJJ | EAST-WEST | | |
|---|---|---|---|-------------|-----------|---|--------|
| A | B | C | A | B | C | | |
| 1 | | | Ronald Schick - Joy Miller Schick, Naples FL | 192.00 | 1 | Thomas Lum, Honolulu HI; John Fox, Whittier CA | 193.00 |
| 2 | 1 | 1 | Roger Wolthuis, Las Vegas NV; Barbara Lukas, Ithaca NY | 183.50 | 2 | Elaine Ware, Vernon BC; Larry Graft, Roseville CA | 179.00 |
| 3 | | | Phil Leon, Grosse Pointe MI; Edward White, Grand Blanc MI | 178.00 | 3 | 1 Laverne Marano, San Juan Capo CA; Kaye Amdon, Orange CA | 173.50 |
| 4 | 2 | | Ruthe Thompson, Hurricane UT; Gladys Lawhon, Denton TX | 169.50 | 4 | 2 Coline Maclean, Los Gatos CA; Edward Sutcliffe, Sonoma CA | 172.50 |
| 5 | | | Lowell Andrews, Huntington Bch CA; Bettie Messer-Heldring, Escondido CA | 165.00 | 5 | 3 John Dockray - Edie Dockray, Villanova PA | 167.00 |
| 6 | 3 | | Barbara Kallaus, Las Vegas NV; Virginia Lewis, Kailua HI | 164.50 | 6 | Denese Hinde - Richard Hinde, Irving TX | 164.00 |
| | 4 | 2 | Ruth Wiener - George Stull, Las Vegas NV | 160.00 | 4 | 2 Louise Connell - Margaret Chappell, Grand Rapids MI | 161.50 |

| | | | NORTH-SOUTH | SECTION YY | EAST-WEST | | |
|---|---|---|---|------------|-----------|--|--------|
| A | B | C | A | B | C | | |
| 1 | 1 | | Glenda Lewis, Boynton Beach FL; Jim Cohen, Boca Raton FL | 186.00 | 1 | Robert Donaldson, Ogden UT; Diana Barber, Bozeman MT | 193.00 |
| 2 | 2 | 1 | Aphrodite Rubin, New York NY; Mary Ann Eldridge, Las Vegas NV | 183.50 | 2 | John Lu, Los Angeles CA; Martha Orloff, Santa Monica CA | 184.50 |
| 3 | | | Susan Abrams - Norm Rosen, Sun City West AZ | 177.50 | 3 | 1 Irving Bloom, West Palm Beach FL; Robert Hoffman, Boynton Beach FL | 170.50 |
| 4 | | | Bill Meltzer - Sandra Tuft, Las Vegas NV | 166.00 | 4 | 2 Stella Blodinger - Jack Blodinger, Boca Raton FL | 169.50 |
| 5 | | | John Gustafson - Helen Gustafson, Des Moines IA | 164.00 | 5 | 3 John Tolson - Lynne Tolson, Bedford NS | 159.00 |
| 6 | | | Alan Darman, Boca Raton FL; William Vinson, Delray Beach FL | 161.50 | 6 | Marjorie Jann, Clark NJ; Pat McSweeney, Westfield NJ | 158.00 |
| | 3 | | Ben Dobson, Cottonwood AZ; Suzanne Wells, Flagstaff AZ | 161.00 | | | |
| | 2 | | Robert Pagliarulo, Roslindale MA; Charles Djerf, Quincy MA | 150.00 | | | |

2ND MONDAY DAYLIGHT OPEN PAIRS 2ND SESSION

| | | | NORTH-SOUTH | SECTION KKK | EAST-WEST | | |
|-----|---|---|---|-------------|-----------|--|--------|
| A | B | C | A | B | C | | |
| 1 | | | Herman Louie - Ming Louie, Fairfax VA | 127.50 | 1 | Philip Altus - Muriel Altus, Tampa FL | 133.50 |
| 2 | | | Mary Vickers, Apex NC; Norman Leslie, New Orleans LA | 127.00 | 2 | 1 June Elder - Sue Reed, Fallbrook CA | 126.50 |
| 3 | | | Brian Ellis, Twinsburg OH; Bruce Keidan, Pittsburgh PA | 117.00 | 3 | 2 Joe Cote, Edmonton AB; Gloria Allan, West Vancouver BC | 114.00 |
| 4 | 1 | | Rhoda Nussbaum, Edison NJ; Leo Rosenbluth, New York NY | 115.00 | 4 | 3 Judy Hummel - Jerry Curtright, Colorado Spgs CO | 113.00 |
| 2/3 | | | Joan Jacobson, Centerville MA; Paul Costantino, Rock Springs WY | 109.00 | | | |
| 2/3 | | | Michel Carriere, Saint-Bruno PQ; Gilbert Lambert, White Rock BC | 109.00 | | | |

| | | | NORTH-SOUTH | SECTION LLL | EAST-WEST | | |
|---|---|---|---|-------------|-----------|--|--------|
| A | B | C | A | B | C | | |
| 1 | | | Howard Pilch, Andover MA; Alan Boston, Las Vegas NV | 133.69 | 1 | 1 Charles West, Salem OR; Samuel Asai, Hood River OR | 135.50 |
| 2 | | | Ross Robbins, Port Isabel TX; Bryce Troyer, Joliet IL | 124.19 | 2 | 2 Burton Lipsky, New York NY; Arnold Goldstein, Lake Worth FL | 129.81 |
| 3 | | | Gerald Di Vincenzo - John Kimel, S Burlington VT | 118.19 | 3 | David Garrett, Muskogee OK; Chris Compton, Dallas TX | 125.81 |
| 4 | | | Donna Marshall - David Marshall, Reading MA | 115.00 | 4 | Peter Filandro - Marie Filandro, Smyrna DE | 118.31 |
| 5 | 1 | | J Thomas Holzer, Hopkins MN; Patti Stuhlman, Minneapolis MN | 111.81 | 5 | Voyteck Pomykalski - K Malette, Cornwall ON | 117.44 |
| 6 | 2 | 1 | Kurt Pocs, San Francisco CA; Andrew Hanes, Provincetown MA | 107.19 | 3 | Dick Jones - Dianne Jones, El Paso TX | 108.81 |
| | | 2 | David McIntyre - Tracey King, Oak Park MI | 100.50 | 1 | Kathryn Alipanah, Midlothian VA; Jeffrey Thomas, Columbia SC | 96.00 |
| | | | | | 2 | Janice Chelini, Santa Barbara CA; Patricia Hurlbert, Santa Ynez CA | 88.81 |

| | | | NORTH-SOUTH | SECTION V | EAST-WEST | | |
|-----|---|---|--|-----------|-----------|---|--------|
| A | B | C | A | B | C | | |
| 1/2 | 1 | 1 | Harriet Brent, Venice FL; Carol Pollock, Northbrook IL | 121.50 | 1 | Tom Joyce, Colchester CT; Richard Prouser, Lake Oswego OR | 126.00 |
| 1/2 | | | Sarah Callicot-Yates, Annandale VA; Stephen Czecha, Potomac MD | 121.50 | 2 | Joanne Molt - Walter Casper, Grand Rapids MI | 123.50 |
| 3 | 2 | | Jane Leslie - Cordette Wall, Birmingham AL | 121.00 | 3 | 1 Ranjan Bhaduri, Dundas ON; Raymond Jung, Hamilton ON | 118.00 |
| 4 | 3 | 2 | Malcolm Coutts - Jim Rife, Guelph ON | 116.50 | 4 | 2 Jim Pestaner - Lucy Pestaner, Potomac MD | 117.00 |
| 5/6 | | | Darwin Afdahl - Kay Afdahl, Virginia Beach VA | 114.50 | 5 | Doug Couchman, N Richland Hls TX; William White, Arlington TX | 116.50 |
| 5/6 | | | Ronald Huffaker, Alpine CA; Harold Huffaker, Danville CA | 114.50 | 3 | 2 Al Bongarzzone - Judy Bongarzzone, Oak Park CA | 106.50 |

2ND MONDAY A/X PAIRS FIRST SESSION

| | | | NORTH-SOUTH | SECTIONS B C E | EAST-WEST | | |
|----|---|--|---|----------------|-----------|---|--------|
| A | X | | A | X | | | |
| 1 | | | Judy Wadas - Bart Bramley, Chicago IL | 464.17 | 1 | 1 Donald Sache, Delta BC; Dennis Groden, West Vancouver BC | 440.28 |
| 2 | | | Natsuko Nishida - Yasuhiro Shimizu, Setagaya-Ku Tokyo JP | 453.62 | 2 | Ed Lewis, Falls Church VA; Earl Glickstein, Gaithersburg MD | 410.65 |
| 3 | 1 | | Hiroko Janssen, Minato-Ku Tokyo I; Yasuko Shrenzel, Kihei HI | 423.12 | 3 | Joan Rubin, Encino CA; Gilbert Steinebaugh, Van Nuys CA | 408.48 |
| 4 | | | Sharon Meng, Tampa FL; Rahn Smith, Brandon FL | 420.25 | 4 | Charles Parker - Shelley Parker, Apex NC | 404.40 |
| 5 | 2 | | Gloria Rabinowitz - Martin Rabinowitz, Narberth PA | 417.79 | 5 | 2 Susan Culham, Edmonton AB; Daniel Bertrand, Calgary AB | 403.39 |
| 6 | | | Hal Hindman, Fairfax VA; Marshall Kuschner, Reston VA | 409.85 | 6 | F Schwade, Brookfield WI; Ruth Stearns, Glendale WI | 395.77 |
| 7 | | | Louise Kurzet - Hadi Allahverdiyan, Portland OR | 404.73 | 7 | Joe Quinn, Katy TX; Ira Hessel, San Antonio TX | 392.60 |
| 8 | | | Stephen Aarons, North York ON; Wayne Timms, Waterloo ON | 403.45 | 8 | 3 Carol Hamilton - James Hamilton, Sarasota FL | 387.56 |
| 9 | | | Phyllis Yates, Bonita CA; Terry Schleppegrell, Anchorage AK | 402.90 | 9 | 4 Owen O'Day, Des Moines IA; Daniel Zagorin, Skokie IL | 374.15 |
| 10 | 3 | | David Graff, Ann Arbor MI; David Kogut, Statesville NC | 394.81 | 10 | Stephen Fuerst - Marty Rogers, Rancho Cordova CA | 373.11 |
| 11 | 4 | | Loarn Thoelecke, San Anselmo CA; Roy Hoppe, San Rafael CA | 391.17 | 11 | Michael Gilbert - Susan Gilbert, Sarasota FL | 368.38 |
| 12 | | | Earle Davis, Glenview IL; Michael Kolacki, Chicago IL | 371.25 | 12 | 5 Drew Becker, Mequon WI; Jonathan Levell, Oak Park IL | 365.69 |
| 13 | | | Bernard Gench, Flushing NY; Judy Schwartz, Floral Park NY | 368.46 | 13 | 6 Jennifer Kuhn - Philip Kuhn, San Mateo CA | 364.90 |
| 14 | | | Robert Hendricks, Virginia Beach VA; Chuck Whidden, Winder GA | 355.85 | 14 | 7 S Supola, Billings MT; Bruce Cook, Spokane WA | 362.69 |
| | 5 | | Stephen Marcus, Miami FL; Richard Sternlieb, Milwaukee WI | 354.78 | 8 | Frances Le Boeuf, Baldwinsville NY; Mary Gorkin, Liverpool NY | 355.92 |
| | 6 | | Herbert Chaice - Judith Chaice, Armonk NY | 351.81 | | | |
| | 7 | | Julius Kerenyi, Walnut Creek CA; Jenny Pinto, Las Vegas NV | 332.72 | | | |

REISINGER BOARD-A-MATCH 1ST SEMIFINAL SESSION

| | | | SECTION MMM | | |
|-----|--|--|--|--|-------|
| 1 | | | Ata Aydin - Gokhan Yilmaz, Istanbul, Turkey; Nafiz Zorlu - Salvador Assael, Turkey | | 16.00 |
| 2/3 | | | Jack Coleman, San Francisco CA; Bob Crossley, Corte Madera CA; Aleksandr Petrunin - Andrew Gromov, RU; Cezary Balicki - Adam Zmudzinski, PL | | 15.50 |
| 2/3 | | | Steve Zolotow, Las Vegas NV; Jeffrey Rothstein - G. Margie Gwozdziński, New York NY; Jerry Goldberg, Yonkers NY; Ilya Levitin, Emerson NJ; Steve Scott, Phoenix AZ | | 15.50 |
| 4 | | | Roy Welland - Bjorn Fallenius - Brad Moss, New York NY; Fred Gitelman, Toronto ON; Steve Garner, Northfield IL; Howard Weinstein, Sarasota FL | | 14.16 |
| 5/6 | | | Richard Schwartz, East Elmhurst NY; Michael Becker - Larry Cohen, Boca Raton FL; Zia Mahmood, New York NY; Michael Rosenberg, Wykagyl NY; David Berkowitz, Old Tappan NJ | | 14.00 |
| 5/6 | | | Richard Zeckhauser, Cambridge MA; Geir Helgemo, Trondheim, Norway; Michel Abecassis, France; Barnett Shenkin, Boca Raton FL | | 14.00 |
| | | | SECTION NNN | | |
| 1 | | | Michael Moss, New York NY; Martin Schifko, Graz A; Darren Wolpert, Thornhill ON; Jurek Czyzowicz, Aylmer PQ | | 16.50 |
| 2 | | | | | |

STRATIFIED B/C/D PAIRS MONDAY 1st SESSION

| | | | NORTH-SOUTH | SECTION H | EAST-WEST | | | | |
|-----|-----|---|---|-----------|-----------|---|---|--|--------|
| B | C | D | | B | C | D | | | |
| 1 | | | Gloria Krauter, Ardmore OK; Veva Gibbard, Sulphur OK | 180.50 | 1 | | | Gordon Grossetta - David Rinehart, Tucson AZ | 198.50 |
| 2 | 1 | | Robert Hill - Brenda Glaze, Anchorage AK | 179.00 | 2 | | | Bruce Greenspan, Danvers MA; Edwin Siegel, New York NY | 186.50 |
| 3 | | | Connie Pugh, Columbia MO; Thomas Ahmann Sr, Mexico MO | 173.50 | 3 | 1 | | Edith Huffman, Woodinville WA; Anne Kao, Bellevue WA | 177.50 |
| 4 | 2 | 1 | Michael Nabrynski - Jennifer Nabrynski, Ashland MA | 172.50 | 4 | | | Raymond Yuenger - Lynn Yokel, Campbell CA | 167.50 |
| 5 | | | Jayne Paquette, Marquette MI; Ronald Kauppila, Temple TX | 170.50 | 5 | | | Janet Dunbar, Calgary AB; Al Quaille, Newmarket ON | 165.50 |
| 6 | 3 | | Elizabeth Nagle, Middletown CT; Helma Strauss, Hartford CT | 168.50 | 6 | 2 | | Kevin Lewis, N Las Vegas NV; Laila Lewis, Las Vegas NV | 162.50 |
| | 4 | | Marie Portz - Scott Vickrey, Denver CO | 165.00 | 3 | 1 | | Alan Hamilton - Susan Hamilton, Berkeley CA | 161.00 |
| | | 2 | Terry Martin, Parkside SK; Lawrence Mason, Fort Collins CO | 154.50 | 2 | | | Arlene Greengard - Stanley Greengard, Torrance CA | 156.50 |
| | | | NORTH-SOUTH | SECTION J | EAST-WEST | | | | |
| B | C | D | | B | C | D | | | |
| 1 | 1 | | Thomas Gray, Tempe AZ; Daniel McGuire, Las Vegas NV | 190.50 | 1 | | | Michael La Beau, Mechanicville MD; Steve Sperry, Mechanicsville VA | 181.50 |
| 2 | | | Charity Sack, Chevy Chase MD; Paul McMullin, Silver Spring MD | 186.00 | 2 | 1 | 1 | Stevan Johnson - Charlyn Johnson, Orange CA | 179.50 |
| 3 | | | Ruth Bernstein - Harold Bernstein, Hillsdale NJ | 184.50 | 3 | | | Norton Hall - Robert Hinkle, Tucson AZ | 173.00 |
| 4 | | | Kelsey Nickerson, Bedford MA; Natalie Bassil, Boston MA | 181.00 | 4 | | | Dorothy Shorts, Mesa AZ; Nicholas Gregorio Sr, Stoneham MA | 171.50 |
| 5 | 2 | 1 | Eddie Moriguchi - Alice Moriguchi, San Francisco CA | 164.00 | 5 | | | Richard D'Litzenberger, Leavenworth WA; Guy Bruno, Peoria AZ | 171.00 |
| 6 | | | Lacy Jennings, San Diego CA; Charles Messenger, Salinas CA | 161.50 | 6 | 2 | | Gail Kahan - John Kahan, Santa Barbara CA | 168.00 |
| | 3 | 2 | Mika Lidov - Rick Barabino, New York NY | 149.50 | 3 | 2 | | James Bent - Anita Bent, Yorba Linda CA | 167.00 |
| | | | NORTH-SOUTH | SECTION M | EAST-WEST | | | | |
| B | C | D | | B | C | D | | | |
| 1/2 | | | Bruce Chapman - Judith Chapman, Sawyer MI | 192.00 | 1 | | | Barbara Dunkley - Joe Lewis, Las Vegas NV | 190.50 |
| 1/2 | | | Bud Biswas, Lexington MA; Peter Morse, North Vancouver BC | 192.00 | 2 | | | Molly Tranovich - Ed Tranovich, Naperville IL | 185.50 |
| 3 | | | Reha Gur - Muffie Gur, Leonardo NJ | 183.50 | 3 | | | Margaret Glasner, Yuma AZ; Mary Touris, Denver CO | 174.00 |
| 4/5 | 1/2 | | Gail Whiteley, Carlsbad CA; Alain Schreiber, Rancho Santa Fe CA | 167.50 | 4 | 1 | 1 | Derek Fiero - Teddi Fiero, Pleasanton CA | 167.50 |
| 4/5 | 1/2 | | Carolyn Timmermann, Portland OR; Rocky Otto, Clifton CO | 167.50 | 5 | 2 | | Lynanne Bolton, Warwick BE; Magda Farag, Hamilton BE | 166.00 |
| 6 | | | John Derald - Jan Derald, Western Springs IL | 164.50 | 6/7 | | | Patricia Worthley, Andover MA; Wen Huang, Rowland Heights CA | 163.00 |
| | 1 | | Carol Frank, Burbank CA; Martin Gayle, Ridgeland MS | 143.50 | 6/7 | | | Douglas Fleckner - James Miller, Las Vegas NV | 163.00 |

MONDAY-TUESDAY SIDE PAIRS FIRST SESSION

| | | | NORTH-SOUTH | SECTION OO | EAST-WEST | | | | |
|-----|---|---|---|------------|-----------|---|---|--|--------|
| A | B | C | | A | B | C | | | |
| 1 | 1 | | William Carlson Jr - Jacquelyn Sollner, St Thomas VI | 178.50 | 1 | 1 | 1 | Chris Jones - Lilian Jones, Houston TX | 201.50 |
| 2 | 2 | | Teresa Szymczak, Walnut Creek CA; Angeline Murray, Danville CA | 175.50 | 2 | | | Virginia Kitterman, Las Vegas NV; Kathryn Gisler, Bend OR | 190.00 |
| 3 | 3 | 1 | Mary Gilroy, Forest Hills NY; Van Ziegler, Fallbrook CA | 173.00 | 3 | 2 | | Minnette Madway - Rita Goldstein, Aventura FL | 172.50 |
| 4/5 | 4 | | Pat Abbey, La Canada CA; Anne Hambric, Glendale CA | 168.00 | 4 | 3 | 2 | John Weinberg - John Aslin, Mercer Island WA | 170.50 |
| 4/5 | | | Saul Horowitz - Enid Horowitz, Henderson NV | 168.00 | 5 | 4 | | Janice Nakao - Thomas Quinlan, San Mateo CA | 165.00 |
| 6 | | | Lois Mason - Nancy Strouse, Las Vegas NV | 166.50 | 6 | | | James Edmunds, Altamonte Spg FL; Joseph Sargent, Rochester NY | 162.50 |
| | 2 | | Nancy Chapman, Pacifica CA; Patricia Di Sciuillo, North Easton MA | 142.00 | | | | | |
| | | | NORTH-SOUTH | SECTION PP | EAST-WEST | | | | |
| A | B | C | | A | B | C | | | |
| 1 | 1 | 1 | Edward Rainone, Las Vegas NV; Molly Hosford, Las Vegas NV | 216.00 | 1 | | | Jean Talbot - Joan Van Geffen, Metairie LA | 205.50 |
| 2 | 2 | | Avi Mukherjee, San Jose CA; Tony Ng, Regina ON | 168.50 | 2 | | | Robert McPhee, Belleville ON; Alice Odenwald, Shawnee Mission KS | 184.50 |
| 3 | | | Ken Gee, Regina SK; Barbara Jay Cornelia, Columbia SC | 168.00 | 3 | | | John De Forest, Chicago IL; Sally Levering, Frankfort IL | 182.50 |
| 4 | 3 | 2 | Mary Ann Wotring - Warren Wotring Jr, Chino Hills CA | 164.00 | 4 | 1 | | Robert Ryan, Glen Rock NJ; Gunnar Niemi, Emeryville CA | 181.00 |
| 5 | 4 | | M Sherrod - Marge Bartel, Austin TX | 159.50 | 5 | 2 | | Bernard Neuhart, Niskayuna NY; Loretta Pruss, Scottsdale AZ | 167.00 |
| 6 | | | Robert Hirschhaut, Boynton Beach FL; Louise Malspeis, Boca Raton FL | 159.00 | 6 | 3 | 1 | Thelma Arendale - Alvin Weekley, Arlington TX | 164.00 |
| | | | | | | 4 | | Glenn Lefebvre - Perry H Chan, Calgary AB | 148.00 |
| | | | | | | | | Bonita Wernli - Mireille Leiggenger, Lausanne SZ | 143.00 |
| | | | NORTH-SOUTH | SECTION QQ | EAST-WEST | | | | |
| A | B | C | | A | B | C | | | |
| 1 | 1 | | A Gorson - Norma Weiner, Philadelphia PA | 187.50 | 1 | | | Stuart L. Shalom, Actrincham EN; Bill Souster, Newport, Gwent BE | 191.50 |
| 2 | 2 | 1 | Sakir Sarimakci - Korkut Ergun, Istanbul, Turkey | 186.00 | 2 | 1 | 1 | Patricia Adam, Huntington Bch CA; Robert Adam, Huntington Bh CA | 190.50 |
| 3 | | | Bram Schwartz, Sydney NS; Phyllis Burstein, Springfield NJ | 175.50 | 3 | | | John Gram - Suzanne St Thomas, Salem OR | 173.50 |
| 4 | | | Jean Willis, El Dorado AR; John Herrmann, Chattanooga TN | 174.00 | 4 | 2 | 2 | Paula Rubin - Morton Rubin, Pittsburgh PA | 168.50 |
| 5 | 3 | | Frank Hechinger - Bea Hechinger, Flushing NY | 173.50 | 5 | | | Ed Weiss, Saint Louis MO; Ronda O'Farrell, Chesterfield MO | 167.50 |
| 6 | | | Bob Luebke, Lafayette CA; Anita Burgis, San Diego CA | 170.50 | 6 | | | Leo Hanley, Las Vegas NV; Michael Nisen, Rolling Meadows IL | 162.50 |
| | 4 | | Patricia Todd, Palm Desert CA; Rossella Todd, Salisbury MD | 169.50 | | 3 | | Charlotte Grant, Aventura FL; Lillian Rosenfeld, Miami FL | 161.00 |
| | | 2 | Judith Bussell, Devonshire BE; Diana Diel, Warwick BE | 160.50 | | 4 | | Edna Clay, Paget BE; John Fosnaught, Indianapolis IN | 157.50 |
| | | 3 | Ralph Cruickshank - Margaret Robbins, Louisville KY | 156.50 | | | | | |

2ND MONDAY AFTERNOON 5/20 PAIRS

| | | | NORTH-SOUTH | SECTION QQQ | EAST-WEST | | | | |
|---|---|---|--|-------------|-----------|---|--|--|--------|
| A | B | C | | A | B | C | | | |
| 1 | 1 | | Leslie Kahan - Sylvia Adler, Goleta CA | 110.09 | 1 | | | Ruth Seldin - Robert Powers, Saint Louis MO | 106.37 |
| 2 | | | William Jaras - Carol Jaras, Brecksville OH | 102.02 | 2 | 1 | | Claudia Vettrano - Geraldine Brurs, | 95.83 |
| 3 | | | Janet Blume - Darnell Blume, Ramsey MN | 85.91 | 3 | 2 | | Marlene McCauslin, Henderson NV; Dianne Rogots, Las Vegas NV | 94.32 |
| 4 | | | Virginia Kennedy - Faye Gwisdala, Henderson NV | 82.06 | 4 | | | Marcia Hatfield, Westerville OH; Linda Rice, Worthington OH | 85.32 |

2ND MONDAY AFTERNOON 50/100 PAIRS

| | | | NORTH-SOUTH | SECTION RRR | EAST-WEST | | | | |
|---|---|---|---|-------------|-----------|---|--|--|--------|
| A | B | C | | A | B | C | | | |
| 1 | | | Barbara Lander - James Earlam, Henderson NV | 165.50 | 1/2 | 1 | | Edith Fiore, Sarasota FL; Blanche Grossman, Las Vegas NV | 159.50 |
| 2 | 1 | | Carol Weiser, Albuquerque NM; Jana George, Rio Rancho NM | 164.50 | 1/2 | | | Jo Anne Georgi - William Georgi, Kalaheo HI | 159.50 |
| 3 | | | Judi Trenton, Hartland MI; Clement Jacobson, Colorado Spgs CO | 152.00 | 3 | 2 | | Norman Wang, Palo Alto CA; James Wu, Fremont CA | 156.50 |
| 4 | 2 | | Linda Whitlock - Elinda Guardino, Las Vegas NV | 148.50 | 4 | | | Richard Colwell - Rosemary Colwell, Colorado Spgs CO | 154.50 |
| 5 | | | Alan Federl - Michael Meyer, Ramsey NJ | 146.50 | 5 | 3 | | Donna Thorne - Nancy Jensen, Henderson NV | 149.50 |
| 6 | | | Barbara Mays, Collierville TN; Peggy Mc Fall, Cordova TN | 144.00 | 6 | | | Karen Fabel - Sandra Schneider, Boca Raton FL | 143.50 |
| 7 | | | Donald Meyer, Las Vegas NV; Ann Rutledge, Roseville CA | 142.50 | 7 | 4 | | Carol Fredlund - Ann Carlson, Minneapolis MN | 141.50 |
| | 3 | | Peter Rhead - Valerie Rhead, Utterson ON | 138.50 | | | | | |
| 4 | | | Roger Niemi - David Gustafson, Henderson NV | 132.50 | | | | | |

2ND MONDAY AFTERNOON 200/300 PAIRS

| | | | NORTH-SOUTH | SECTION YYY | EAST-WEST | | | | |
|-----|---|---|---|-------------|-----------|---|--|---|--------|
| A | B | C | | A | B | C | | | |
| 1 | 1 | | Anthony Lenzi, Pembroke Pines FL; Scott Keiling, Lghthse Point FL | 182.00 | 1 | 1 | | Patricia Remmer, Ponte Vedra Bch FL; Albert Lewis, Ponte Vedra FL | 160.00 |
| 2 | | | Carolyn Kwiatek, Mountain View CA; Robert Elliott, Lincoln CA | 163.00 | 2 | | | Donald Smith, Calgary AB; Harold Sanchez, Denver CO | 153.50 |
| 3 | 2 | | Man Ho Han, Chicago IL; Chuck Chang, Evanston IL | 152.00 | 3 | | | Esther Wallace - Lorine Clark, Las Vegas NV | 152.50 |
| 4 | 3 | | Bill Willis, El Dorado AR; Margaret McKean, Annapolis MD | 139.50 | 4 | | | Judy McCaffrey - John McCaffrey, Oceanside CA | 149.00 |
| 5 | 4 | | Judy Belknap, Henderson NV; Ginger Stickell, Las Vegas NV | 137.50 | 5 | 2 | | Sylvan Steinberg, Skokie IL; Deborah Bronaugh, North Las Vegas NV | 137.00 |
| 6/7 | | | Al Chaney, Santa Fe NM; Richard Westphal, Albuquerque NM | 133.00 | 6 | 3 | | Nancy Benedict - Gerald Benedict, Englewood CO | 133.00 |
| 6/7 | | | Robert Warriner - Marian McClure, Albuquerque NM | 133.00 | 4 | 4 | | Anoush Stoddart, Lincoln NE; Richard Turke, Sierra Vista AZ | 132.50 |

MONDAY EVENING SIDE PAIRS

| | | | NORTH-SOUTH | SECTION PP | EAST-WEST | | | | |
|-----|---|---|---|------------|-----------|---|---|--|--------|
| A | B | C | | A | B | C | | | |
| 1 | | | Darlene Shirey - Steve Shirey, Fort Worth TX | 156.13 | 1 | | | Alola Gudnadottir, Borgarnes, Icel; Kristjan Snorrason, Dorgarnes, Ice | 161.41 |
| 2 | 1 | | Yo Buehler, Williamsburg VA; Sanae Matsumoto, Honolulu HI | 146.45 | 2 | | | Maurice Emond, Allenstown NH; Mark Teich, Concord NH | 158.66 |
| 3 | 2 | 1 | Shirley Rosenblum, Burnsville MN; Kay Johnson, Minneapolis MN | 145.54 | 3 | | | Erla Sigurjonsdottir, 220 Hafnarfjord IC; Sigfrid Thordarson, Hafnarfjodro | 158.10 |
| 4 | | | Guplaugur Seinson, Reykjavik, Ice; Jon Stefansson, Kopavogur, Ice | 144.09 | 4 | | | Jean Talbot - Joan Van Geffen, Metairie LA | 145.91 |
| 5 | | | Britain Beezley - Shelba Parmley, Oklahoma City OK | 139.31 | 5 | | | Tom Joyce, Colchester CT; Richard Prouser, Lake Oswego OR | 144.45 |
| | 3 | | Kris Digre, Conroe TX; Cedric Hill, Spring TX | 137.40 | | 1 | | Rachel Chittaro, Kildeer IL; Edward Nield, Westchester IL | 140.37 |
| | | 2 | Frederick Bowles - Kenneth Paris, Henderson NV | 134.90 | | 2 | 1 | Lynn Condon, West Redding CT; Frances Kondrasko, Stratford CT | 140.19 |
| | | | | | | 3 | | Herlaine Bakerman, Ft Lauderdale FL; Joanne Kline, Tamarac FL | 124.91 |
| | | | NORTH-SOUTH | SECTION QQ | EAST-WEST | | | | |
| A | B | C | | A | B | C | | | |
| 1 | | | Jean Willis, El Dorado AR; John Herrmann, Chattanooga TN | 174.50 | 1 | 1 | | Leroy Abinanti - Marigail Abinanti, Kent WA | 157.95 |
| 2 | 1 | | Robert Wood, San Francisco CA; Reba Lynch, Fullerton CA | 159.50 | 2 | | | James Edmunds, Altamonte Springs FL; Joseph Sargent, Rochester NY | 155.14 |
| 3 | | | Toshiko Yingst - Bonnie Bagley, Colorado Spgs CO | 155.50 | 3 | 2 | | Jeff Strutzel, Redondo Beach CA; Mariko Kakimoto, Newport Coast CA | 151.91 |
| 4 | 2 | | Annette Goldberg, Berkeley CA; Jere Raymond, Chattanooga TN | 144.50 | 4 | | | Tarek Radjef, Dallas TX; Raymond Raskin, King of Prussia PA | 143.00 |
| 5 | | | Robert McPhee, Belleville ON; Alice Odenwald, Shawnee Mission KS | 143.50 | 5 | 3 | 1 | Dayle Masumura, Vienna VA; Ronda O'Farrell, Chesterfield MO | 140.32 |
| | 3 | 1 | Constance Raaz, Las Vegas NV; Marjorie Gardner, Honolulu HI | 129.00 | | 4 | 2 | John Fosnaught, Indianapolis IN; Edna Clay, Paget BE | 133.55 |
| | | 2 | Edward Worsfold, Surrey BC; Jacqueline Phillips, Richmond BC | 127.50 | | | | | |
| | | | NORTH-SOUTH | SECTION RR | EAST-WEST | | | | |
| A | B | C | | A | B | C | | | |
| 1 | 1 | 1 | Susan Ohlfest, Phoenix AZ; Richard Hunt, Scottsdale AZ | 163.50 | 1 | 1 | 1 | Lynn MacQuoid - Arlene Elder, Big Bear Lake CA | 164.00 |
| 2 | | | Phyllis Allmacher, Columbus OH; Larry Paisley, Westerville OH | 162.00 | 2 | 2 | | Martha Lundholm, Carmichael CA; Sara Kingsley, Fair Oaks CA | 152.50 |
| 3 | 2 | | Fred Schenker, Pittsburgh PA; Amal Dasgupta, Wilmington DE | 142.50 | 3 | | | John Kuharetz, New Milford NJ; Merle Stetser, Honolulu HI | 147.00 |
| 4 | | | Soohi Synn, Seoul KO; Ken Monzingo, San Diego CA | 137.50 | 4/5 | 3 | | Tom Henkel, Chula Vista CA; Betty Birmingham, Bonita CA | 143.00 |
| 5 | 3 | 2 | Lynne Cook, Wyandotte MI; Debra Eaves, Northville MI | 136.00 | 4/5 | | | Jean Carney - Donald Rutstein, Scottsdale AZ | 143.00 |
| | | | | | | 2 | | Jane Frost, San Rafael CA; Christina Decker, Bel Tiburon CA | 112.50 |
| | | | NORTH-SOUTH | SECTION SS | EAST-WEST | | | | |
| A | B | C | | A | B | C | | | |
| 1 | 1 | | Jack Hayden - Rosemary Hayden, Las Vegas NV | 168.50 | 1 | | | James O'Neil, Palo Alto CA; Gary Macgregor, Portola Valley CA | 166.00 |
| 2 | 2 | 1 | Patricia Riding, Smith's BE; Margaret McKean, Annapolis MD | 155.00 | 2/3 | | | Shirley Scott, Colorado Spgs CO; Henry Caspar, Toronto ON | 148.50 |
| 3/4 | 3 | | Laura Eisenhart - Larry Eisenhart, Sun Lakes AZ | 145.00 | 2/3 | | | Michael Efrain - Philip Silverstein, Cote Saint-Luc PQ | 148.50 |
| 3/4 | | | Aileen Osofsky, Phoenix AZ; Barbara Nudelman, Chicago IL | 145.00 | 4 | 1 | 1 | Sakir Sarimakci - Korkut Ergun, Istanbul | 147.50 |
| 5 | 4 | | Keith Mackenzie - Marion Mackenzie, Parksville BC | 144.50 | 5 | | | Jill Wooldridge, Buffalo NY; Deborah Drury, Vero Beach FL | 139.00 |
| | | 2 | Norma Cloyd, Paducah KY; Ruth Williams, Jacksonville FL | 140.50 | | 2 | 2 | Judith Bussell, Devonshire BE; Barbara Huntington, Hamilton BE | 134.00 |
| | | | | | | 3 | | Grant Mackinnon, Downsview ON; William Isham, Albuquerque NM | 130.50 |
| | | | | | | 4 | | Andrea Hayman, New York NY; Mason Davis, Marietta GA | 130.00 |

2ND MONDAY A/X PAIRS 2ND SESSION

| | | | NORTH-SOUTH | SECTIONS II JJ KK | EAST-WEST | | | |
|---|---|--|---|-------------------|-----------|--|--|--|
| A | X | | | A | X | | | |
| 1 | | | Stephen Aarons, North York ON; Wayne Timms, Waterloo ON | 426.75 | | | | |

| | | NORTH-SOUTH | | SECTIONS II JJ KK | | EAST-WEST | | |
|---|---|---|--------|-------------------|---|--|---|--------|
| A | X | A | X | A | X | A | X | |
| 14 | | Nancy Pickering, Penllyn PA; Phil Brady, Philadelphia PA | 369.29 | 14 | | Forest Lowe, Eden Prairie MN; Emily Bone, Bellevue WA | 359.00 | |
| | 5 | Doreen McOrmond - Sheila Sache, Delta BC | 365.00 | | | | | |
| | 6 | Betty Jane Corbani, New Milford CT; Janice L Wild, Briarcliff NY | 362.27 | | | | | |
| | 7 | Jennifer Kuhn - Philip Kuhn, San Mateo CA | 360.25 | | | | | |
| 2ND MONDAY BOARD-A-MATCH TEAMS | | | | | | | | |
| | | A | | B | | C | | |
| | | 1/2 | | | | | | |
| | | 1/2 | | | | | | |
| | | 3/4 | 1 | 1 | | | | |
| | | 3/4 | | | | | | |
| | | 5 | 2 | | | | | |
| | | 6 | | | | | | |
| | | 7/10 | | | | | | |
| | | 7/10 | 3/4 | | | | | |
| | | 7/10 | | | | | | |
| | | 7/10 | 3/4 | | | | | |
| | | | 5 | | | | | |
| | | | | 2/3 | | | | |
| | | | | 2/3 | | | | |
| 2ND MONDAY STRATIFIED B/C/D PAIRS 2ND SESSION | | | | | | | | |
| | | NORTH-SOUTH | | SECTION MM | | EAST-WEST | | |
| B | C | D | B | C | D | B | C | |
| 1 | 1 | Harvey Jaffe, Huntington Bh CA; Michael Kerr, Irvine CA | 180.00 | 1 | | Kelsey Nickerson, Bedford MA; Natalie Bassil, Boston MA | 189.00 | |
| 2 | 2 | Jon Downing, Solihill EN; Liam Johnstone, Birmingham EN | 169.50 | 2 | 1 | Mika Lidov - Rick Barabino, New York NY | 182.50 | |
| 3 | | Douglas Fleckner - James Miller, Las Vegas NV | 169.00 | 3 | | Barbara Baeskens, Chino CA; Charo Holdo, Pasadena CA | 179.00 | |
| 4 | | Diane Schaffer, Frisco TX; Tomi Fitzgerald, Plano TX | 168.00 | 4 | | Lacy Jennings, San Diego CA; Charles Messenger, Salinas CA | 172.50 | |
| 5 | | Margaret Glasner, Yuma AZ; Mary Touris, Denver CO | 164.50 | 5 | | Bob Gruber - Linda Gruber, Camarillo CA | 164.00 | |
| 6 | 3 | Derek Fiero - Teddi Fiero, Pleasanton CA | 160.50 | 6 | | Sondra Rothstein - Joan Carlson, Las Vegas NV | 162.50 | |
| 2ND MONDAY EVENING 50/20/10 PAIRS | | | | | | | | |
| | | NORTH-SOUTH | | SECTION NN | | EAST-WEST | | |
| B | C | D | B | C | D | B | C | |
| 1 | | Norman Swanson - Gloria Swanson, Rivervale NJ | 200.50 | 1 | 1 | 1 | Terry Martin, Parkside SK; Lawrence Mason, Fort Collins CO | 181.00 |
| 2 | | Paul Gelb, Studio City CA; Margery Gould, Los Angeles CA | 191.50 | 2 | | | Connie Pugh, Columbia MO; Thomas Ahmann Sr, Mexico MO | 180.50 |
| 3 | | Michael La Beau, Mechanicsville MD; Steve Sperry, Mechanicsville VA | 190.00 | 3 | 2 | 2 | Tom McCrackin, Carpinteria CA; Kalon Kelley, Santa Barbara CA | 176.00 |
| 4 | 1 | Thomas Gray, Tempe AZ; Daniel McGuire, Las Vegas NV | 176.50 | 4 | | | Gordon Grossetta - David Rinehart, Tucson AZ | 174.00 |
| 5 | 2 | James Tull - Jean Tull, Sacramento CA | 174.50 | 5 | 3 | | Marjorie Levine - Alan Levine, Massapequa NY | 167.50 |
| 6 | 3 | Stevan Johnson - Charlyn Johnson, Orange CA | 167.00 | 6 | | | Gregory Chaffee, Chula Vista CA; Bette Wrona, San Diego CA | 164.50 |
| 2ND MONDAY EVENING 300/200/100 PAIRS | | | | | | | | |
| | | NORTH-SOUTH | | SECTION OO | | EAST-WEST | | |
| B | C | D | B | C | D | B | C | |
| 1 | | Janet Dunbar, Calgary AB; Al Quaille, Newmarket ON | 198.00 | 1 | | | Russell Black, Indianapolis IN; Melvin Ward, Carmel IN | 183.00 |
| 2 | | Hansi Torczyner, Burlingame CA; William Stone, Leesburg FL | 174.00 | 2 | 1 | 1 | Carol Frank, Burbank CA; Martin Gayle, Ridgeland MS | 181.00 |
| 3 | 1 | William Tank - Ann Tank, Omaha NE | 169.00 | 3 | | | Ken McClenahan, Lone Tree CO; Caryn Villalon, Willits CA | 175.00 |
| 4 | 2 | Alan Hamilton - Susan Hamilton, Berkeley CA | 163.50 | 4 | 2 | | Gail Whiteley, Carlsbad CA; Alain Schreiber, Rancho Santa Fe CA | 168.50 |
| 5 | | Joan Tschirki, Parker CO; Paula Warren, Englewood CO | 162.00 | 5/6 | | | Donna Weaver, Laguna Niguel CA; Winkie Webb, Irvine CA | 164.50 |
| 6 | 3 | Edith Huffman, Woodinville WA; Anne Kao, Bellevue WA | 161.00 | 5/6 | | | Bud Biswas, Lexington MA; Peter Morse, North Vancouver BC | 164.50 |
| | 4 | David Willmott, Folsom CA; Donald Peterson, Elk Grove CA | 156.50 | | | | | |
| 2ND MONDAY EVENING 50/20/10 PAIRS | | | | | | | | |
| | | NORTH-SOUTH | | SECTION QQ | | EAST-WEST | | |
| A | B | C | A | B | C | A | B | |
| 1 | 1 | Lester Lemke - Barbara Lemke, Las Vegas NV | 63.00 | 1 | | Maria Magoun, Thousand Oaks CA; Eleanor Sanes, Westlake Vlg CA | 63.00 | |
| 2 | | Ann Carlson - Carol Fredlund, Minneapolis MN | 62.00 | 2 | | Rose Hand, Torrance CA; Ann Keen, Sarasota FL | 58.00 | |
| | 2 | Marcia Hatfield, Westerville OH; Linda Rice, Worthington OH | 53.50 | | 1 | 1 | Toy Uchizono - Hiro Sasaki, Henderson NV | 53.50 |
| | | Sara Kuperstein - Hortensia Azerraf, Caracas VZ | 51.00 | | 2 | | Pamela Barbee - Curtis Barbee, Newnan GA | 45.00 |
| 2ND MONDAY EVENING 300/200/100 PAIRS | | | | | | | | |
| | | NORTH-SOUTH | | SECTION RRR | | EAST-WEST | | |
| A | B | C | A | B | C | A | B | |
| 1 | | James McCartney - Louise McCartney, Ottawa ON | 161.84 | 1 | | Judy McCaffrey - John McCaffrey, Oceanside CA | 165.00 | |
| 2 | 1 | James Fallis - Alice Fallis, Wichita KS | 152.24 | 2 | | Alan Griswold, Indianapolis IN; Richard Jones, Anderson IN | 162.14 | |
| 3 | 2 | Earl Hill, Surprise AZ; Walter Yllo, North Attleboro MA | 146.89 | 3 | 1 | 1 | Richard Colwell - Rosemary Colwell, Colorado Spgs CO | 147.98 |
| 4 | | Leonard Alecci - Audrey Twiss, Erie PA | 138.84 | 4 | 2 | 2 | Grady Nichols - Suzanne Nichols, Montevillo AL | 145.37 |
| 5 | | Harold Sanchez, Denver CO; Gary Irwin, Anchorage AK | 135.75 | 5 | 3 | | Frank Hansen - Kathryn Hansen, Henderson NV | 142.62 |
| 6 | 3 | Irene Sprinkle - Larry Sprinkle, Dayton OH | 133.23 | 6 | 4 | | Clarke Fairbrother, Santa Ana CA; Robert Walton, Culver City CA | 141.74 |
| | 4 | Judith Hunt, Centennial CO; Daniel Taylor, Littleton CO | 132.68 | | | | | |
| | | Peter Rhead - Valerie Rhead, Utterson ON | 131.65 | | | | | |
| | 1 | Michael Collier, Greenbelt MD; Cathy River, Madison WI | 113.25 | | | | | |
| | 2 | | | | | | | |

| FAREWELL COMPACT KNOCKOUTS | | | | | | | | | | |
|----------------------------|---|---|---------------------------|---|--|---------------------------|---|---|--|--|
| Bracket 1 16 Teams | | | | | | | | | | |
| 24.53 | 1 | Joel Hoersch, La Jolla CA; William Hall, Thousand Oaks CA; Jon Wright, La Mesa CA; Robert Solomons, Huntington Beach CA | 11.88 | 2 | Dan Molnar, Chula Vista CA; George Bessinger, Spring Valley CA; Joan Waite, Spring Hill FL; Carl Fortney, Kirksville MO | 4.80 | 3 | Ken King, Westlake Vlg CA; Maria Pendergast, W Hollywood CA; Maria Abbott, San Francisco CA; Adi Arieli, Los Angeles CA | | |
| 18.40 | 2 | Richard Finberg, Pittsburgh PA; Harold Mouser Jr, Philadelphia PA; Gerald Caravelli, Des Plaines IL; Jerry Goldfein, Lincolnwood IL | 8.71 | 3 | Alberto Feilhaber, Irvine CA; Elizabeth Baecher, Mount Kisco NY; Steven Love, White Plains NY; Milton Gottlieb, Asheville NC | 3.92 | 4 | Robert Alfandary - Susan Nurock, Lafayette CA; Lynda Hundertmark - Katherine Stewart, Albuquerque NM | | |
| 13.49 | 3 | Susi Katz Ross - Harry Ross, Winter Spgs FL; Mark Epstein - Roberta Epstein, Las Vegas NV | 7.13 | 4 | Paul Soper, Sierra Vista AZ; Scott Campbell, Sun City CA; Reiko Raese, Boulder CO; Ann MacMillan, Las Vegas NV | Bracket 8 14 Teams | | | | |
| 11.04 | 4 | Suzette Wynn - Kathy Schenk, Phoenix AZ; Jan Horwitz - Marianne Spanier, Scottsdale AZ | 12.94 | 1 | John Bortins, Louisville CO; Nancy Benamati, Aurora CO; Forest Dillinger, Golden CO; Clinton Heiple, Boulder CO | 5.75 | 1 | Per Skullestad - Barbara Kim - Marvie Kelly - Lola Gebauer, Honolulu HI | | |
| Bracket 2 16 Teams | | | | | | | | | | |
| 21.05 | 1 | Jess Stuart - Lois Stuart, West Chester PA; Elizabeth Refaie - Mohsen Refaie, Wilmington DE | 9.71 | 2 | Lynne Newman - Randall Dougherty, Seattle WA; Robert Lawrence, Bronx NY; Ivor McGloughlin, Pittsburgh PA | 4.31 | 2 | Rita Wolak, New Britain CT; Ausra Geaski, East Hartford CT; Mark Ambrose, Louisville KY; Linda Harrison, Calgary AB | | |
| 15.79 | 2 | Craig Jacobson, Skokie IL; Barbara Lehman, Glenview IL; Paul Meerschaert, Excelsior MN; Joan McKeon, Windsor Queensl AN | 7.12 | 3 | H Vince Mueller - Bruce Blakely, San Rafael CA; Larry King, Hanalei HI; Chandler Flickinger, Portola Valley CA | 3.16 | 3 | Michael Bossert - Sara Bossert, Las Vegas NV; Helen Gambel - Candace Asebrook, Henderson NV | | |
| 11.58 | 3 | Ronald Newburg - Elaine Newburg, Marblehead MA; Sondra Caplin - Donald Caplin, Waltham MA | 5.82 | 4 | Jean Johansson, Portland OR; Shirley Teather - David Kawashima, Ottawa ON; Stephen Pickett, Vancouver BC | 2.59 | 4 | Bernard Simkin - Gary Shekhter, Rancho Santa Fe CA; Emerita Hayward, Leonardtown MD; Helene Katz, Louisville KY | | |
| 9.47 | 4 | Harry Yockey - Jacqueline Yockey, Simi Valley CA; Bob Pfeiffer, Chesapeake VA; Susan Bowles, Va Beach VA | Bracket 5 16 Teams | | | | | | | |
| Bracket 3 16 Teams | | | | | | | | | | |
| 18.46 | 1 | Mark Bartusek, Santa Barbara CA; James Bartusek, Prescott AZ; Josh Sher, Washington DC; Jerry Weinstein, Las Vegas NV | 12.94 | 1 | John Bortins, Louisville CO; Nancy Benamati, Aurora CO; Forest Dillinger, Golden CO; Clinton Heiple, Boulder CO | 5.06 | 1 | Betty McDonald - Dorothy Boice, Atlanta GA; Lena Russo - Dolores Checeni, Natick MA | | |
| 13.85 | 2 | Wayne Christensen Jr - J Evans - Jolie Hess - Terry Currie, Houston TX | 9.71 | 2 | Lynne Newman - Randall Dougherty, Seattle WA; Robert Lawrence, Bronx NY; Ivor McGloughlin, Pittsburgh PA | 3.80 | 2 | June Wood - Daniel Carter, Encinitas CA; Joan Piaget - Gerry Piaget, Palo Alto CA | | |
| 10.15 | 3 | Alan Goldman, Queens Vlg NY; Jeri Baraf, Roslyn NY; Judi Callahan, Fair Oaks CA; George Lim, Auburn CA | 7.12 | 3 | H Vince Mueller - Bruce Blakely, San Rafael CA; Larry King, Hanalei HI; Chandler Flickinger, Portola Valley CA | 2.78 | 3 | Joy Cogburn, Bertram TX; Mary Weiser, Pottsboro TX; Phyllis Wolford, Lyme NH; Ruth Horner, Sunapee NH | | |
| 8.31 | 4 | Tutty Wetzel - Marianne Keller - Sheila Wimer, Reno NV; Josephine Grabow, Helotes TX | 5.82 | 4 | Jean Johansson, Portland OR; Shirley Teather - David Kawashima, Ottawa ON; Stephen Pickett, Vancouver BC | 2.28 | 4 | Elle McCarty, Mesa AZ; Albert Dobin, Tempe AZ; Christina Loew - Beverly Eaton, Scottsdale AZ | | |
| Bracket 4 16 Teams | | | | | | | | | | |
| 15.84 | 1 | Susan Ostrowski, Arlington MA; Richard Willey, Alameda CA; Lon Sunshine, Framingham MA; Alvin Levy, Commack NY | Bracket 6 16 Teams | | | | | | | |
| Bracket 7 16 Teams | | | | | | | | | | |
| 8.72 | 1 | Larry Barr - Lawton Hutchison - Barbara Hutchison, Austin TX; Geoff Masters, Oro Valley AZ | 9.97 | 1 | Bernard Bertonis, Scotts Valley CA; Marilyn Nadler, Santa Cruz CA; Carol Maggipinto - Mark Maggipinto, Aptos CA | Attendance tops | | | | |
| 6.54 | 2 | Nancy Fillmore - David Stonex, Las Vegas NV; Kay Egner - Theodore Egner, Pompano Beach FL | 7.48 | 2 | Michael Heymann, Los Altos CA; Stephen Tu, Milpitas CA; Glenn Young, Alexandria VA; Angie Knechtges, Grafton OH | 16,000 | | | | |

Attendance tops

16,000

Attendance at the 2001 Las Vegas NABC through Monday evening (including the midnight game) is 16,004 tables. Las Vegas will make the record books as the largest Fall NABC ever.....until next time!

TODAY'S SCHEDULE

*Unless otherwise noted, strat breaks for Stratified Open and Stratified Senior events are: A (2000+), B (750-2000), C (0-750). For Strati-Flighted events, A/X are 3000+/0-3000 and play in their own game; B (1000-2000), C (500-1000) and D (0-500) play in their own game.
 **Members whose dues payment is current and Life Masters whose service fee payment is current.

| Event | Session | Entry/player/session | | Sold |
|---|---------|----------------------|---------|-----------------|
| | | ACBL members** | Other | |
| Tuesday, November 27, 2001, 10:00 a.m. | | | | |
| Strati-Flighted Swiss Teams* | | | | |
| Flight A/X | | \$12 | \$13 | Conrad |
| Flight B/C/D | | \$12 | \$13 | Conrad |
| Stratified Senior Swiss Teams* | | \$12 | \$13 | Conrad |
| Note: Both events are 7 rounds, 7 boards, playthrough. | | | | |
| Tuesday, November 27, 2001, 10:00 a.m. & 1:00 p.m. | | | | |
| Stratified Fast Open Pairs* | 1-2 | \$12 | \$13 | Pavilions 1-2 |
| Tuesday, November 27, 2001, 10:00 a.m. & 2:00 p.m. | | | | |
| On to Houston KO Teams 3-4 | \$12 | | | Conrad |
| Side Game Series IV* | single | \$12 | \$13 | Pavilions 10-11 |
| Stratified 299er Swiss Teams | single | \$11 | \$12 | Pavilions 10-11 |
| 299er, 199er, 99er, 49er Pairs | single | \$11 | \$12 | Pavilions 10-11 |
| 0-20, 0-5 Pairs | single | \$11 | \$11 | Pavilions 10-11 |
| Tuesday, November 27, 2001, 11:00 a.m. & 5:00 p.m. | | | | |
| Stratified Open Swiss Teams* | 1-2 | \$12 | \$13 | Conrad |
| Stratified Open Pairs* | 1-2 | \$12 | \$13 | Pavilion 9 |
| Tuesday, November 27, 2001, Noon & 7:00 p.m. | | | | |
| REISINGER BOARD-A-MATCH TEAMS | 1-2F | \$14.50 | \$15.50 | Ballroom B |
| NORTH AMERICAN SWISS TEAMS | 1-2F | \$13 | \$14 | Ballroom C |
| Tuesday, November 27, 2001, 6:00 p.m. | | | | |
| Side Game Series IV* | single | \$12 | \$13 | Pavilion 10-11 |

See you at the 2002 Spring NABC March 7-17 in Houston.

FRIDAY COMPACT KNOCKOUT TEAMS

This set of results got lost in the shuffle when we were suffering our computer problems last week.

Bracket 1 7 Teams

1.23 1 Larry Cavanaugh, Lemoore CA; Loretta Bromberg, Bel Tiburon CA; Eddie Rose, Laguna Niguel CA; Ted Alexander, Laguna Hills CA

1.03 2 Richard Ekstrum, Crystal MN; Linda Webb, Fargo ND; E Sue Grue - T Grue, Minneapolis MN

Bracket 2 10 Teams

1.03 1 Stefan Bernhardt, Palm Harbor FL; Tom Fletcher, Lewis Center OH; Michael Marcucci, San Gabriel CA; Eleanor Calder, Stenen SK

0.82 2 Alan Walters, Cape Porpoise ME; Phil Rouse, Marion IN; Ausra Geaski, East Hartford CT; Rita Wolak, New Britain CT

0.62 3 Edwin Glickman, Snowmass CO; Rita Hiller, Idaho Falls ID; Joan Piaget - Gerry Piaget, Palo Alto CA

2ND SUNDAY ZIP KNOCKOUT

14 Teams

3.64 1 Sam Katz, Hinsdale IL; Joel Wooldridge, Bufalo NY; Michael Wickham, Naperville IL; John Kranyak, Bay Village OH; Joe Grue, Bronx NY

2.73 2 Helene Katz, Louisville KY; Bruce Neiger, Merrick NY; Roberto Scaramuzzi, San Diego CA; Howard Einberg, Los Angeles CA; David Milton, Herndon VA

1.82 3/4 Brian Reynolds - Samantha Macdouglass, Van Nuys CA; Jennifer Chalfan - Chris Moore, South Pasadena CA

1.82 3/4 Charles Aldenderfer - Peter Aldenderfer, Indianapolis IN; Brian Hingerty - Geo. Fred Williams III, Knoxville TN

PHOENIX MORNING KNOCKOUTS

Bracket 1 12 Teams

30.67 1 Daniel Boye, Syracuse NY; Sheldon Justan, Henderson NV; Douglas Ross, Rochester NY; Albert Shrive, Clarks Green PA; Charles Miner, Orlando FL; Steven Barcus, Sorrento FL

23.00 2 Daniel Colatosti, Waltham MA; John Malley, Pascoag RI; Paul Kinney, Jamaica Plain MA; Ed Lewis, Falls Church VA; James Murphy, Chesapeake VA; Harold Feldheim, Hamden CT

15.34 3/4 Guy Bruno - Steve Bruno - Darrell Keel, Peoria AZ; Richard D'Litzenberger, Leavenworth WA

15.34 3/4 Ellen Anten, Encino CA; Steve Gross, Westlake Vlg CA; Marjorie Michelin, Los Angeles CA; Nels Erickson, Meadview AZ; Andrew Vinock, Woodland Hills CA; Stephen Gladyszak, Chelsea MA

Bracket 2 12 Teams

23.74 1 Yas Takeda, Hacienda Hgts CA; Subba Ravipudi, Downey CA; Steve Sperry, Mechanicsville VA; Phil Lien, Williamsburg VA; Sorin Samanta, Rochester MN

17.81 2 Bernie Lambert, Viking AB; Allan Sorensen - Paul Sorensen, Berwyn AB; Barbara Jay Cornelia, Columbia SC; Dan Mathieson, Regina SK

11.87 3/4 Henry Wong, Medford MA; Chien-Jen Huang, Nanjing, China; Jeff Fang, Arcadia CA; Tzung-Fang Guo, Los Angeles CA

11.87 3/4 Michael Walrath, Fort Worth TX; Doyle Hughes, Indian Wells AZ; Lawrence Harding, Hampstead NC; Kelley Hwang, New York NY

Bracket 3 12 Teams

17.17 1 Coni Barlow - Donald Barlow Jr, Royal Oak MI; Curt Hofer - Kathy Hofer, Novi MI

12.88 2 Mark Krusemeyer - Gloria Krusemeyer, Northfield MN; Svetlana Stojic, Salt Lake City UT; Doug Adair, Midvale UT

8.59 3/4 Gerry Schechter, Englewood CO; William Fitch, Denver CO; Carolyn Newcomb - Jerry Newcomb, Littleton CO

8.59 3/4 Lillian Hilles, Irvine CA; Edwin Hagerman, Lakewood CO; Dick Duff, Denver CO; Thomas Lenahan, Littleton CO

Bracket 4 13 Teams

13.95 1 Pradeep Jhavar - Vandana Jhavar - Aniko Szabo - Tamas Szabo, Layton UT; Robert Ipswitch, San Mateo CA; John Harpootlian, Menlo Park CA

10.46 2 Claude Tremblay - Muriel Tremblay, Kanata ON; Carolyn Boone - Robert Boone, Bend OR

6.98 3/4 Irene Powers, Naples FL; Eileen Tortorice, Bonita Spgs FL; Al Schlanger - Dorothy Schlanger, West Palm Beach FL

6.98 3/4 William Wood Jr - Patricia Wood, Hartsdale NY; Gregory McLaughlin, Irvine CA; Margaret Maidment, Bakersfield CA

Bracket 5 16 Teams

11.96 1 Errol McAlexander, Denver CO; Frances Evans - Brett Goldston, Seattle WA; David Osmundsen, Wheat Ridge CO

8.97 2 W. Ann Wilson - Robert Wilson, Ventura CA; Bob Weise - Cathy Weise, Reno NV

5.98 3/4 Anne Tomlinson - Betty McDonald - Dorothy Boice, Atlanta GA; Patricia Riding, Smith's BE

5.98 3/4 Brian Hegarty - Elaine West Fry, Colorado Spgs CO; Joy McHaffie - Art McHaffie - Neil Hunter - Anita Carlson, Santa Fe NM

SUNDAY-MONDAY MORNING COMPACT KNOCK-OUTS

Bracket 1 12 Teams

12.27 1 Lizabeth Kennedy, Germantown WI; Gary Williams, Milwaukee WI; Martin Morris, Wheeling IL; James Kehoe, Glen Ellyn IL

9.20 2 Phillip Goatz - Barbara Dunkley - Joe Lewis, Las Vegas NV; John Waken, Arcadia CA

6.75 3 Karl Keller, Colorado Spgs CO; Shelba Parmley - Britain Beezley, Oklahoma City OK; Ed Howard, Wichita KS

5.52 4 Sara Leckie - Barbara Hemmeter - Patricia Dreinhoefer, Knoxville TN; Sara Mantel, Fayetteville NC

Bracket 2 13 Teams

7.51 1 Jason Ciano - Fabrice Lecomte, New York NY; Korkut Ergun - Sakir Sarimakci, Istanbul

5.63 2 Evan Markowitz - Edwin Siegel - Vaughan Marks, New York NY; Paul Birnbaum, Brooklyn NY

4.13 3 Marilyn Nadler - Annamae Hackwood, Santa Cruz CA; Carol Maggipinto, Aptos CA; Bernard Bertonis, Scotts Valley CA

3.38 4 Larry King, Hanalei HI; Ruth Goodpasture, Bourbonnais IL; John Javella, Burnham IL; Chandler Flickinger, Portola Valley CA

Bracket 3 16 Teams

5.98 1 Nancy Benedict - Gerald Benedict, Englewood CO; Michael Gecht, Staten Island NY; Harold Sanchez, Denver CO

4.49 2 Ruth Bowser, Schererville IN; Patricia Tretthewey, Chesterton IN; Donna Kellerman, Imperial CA; Shirley Peddicord, Hobart IN

2.99 3/4 F. Marion Fletcher, Statesboro GA; Deb Phillips - Alex Phillips, N Little Rock AR; Edward Foran, Marietta GA

2.99 3/4 ChingLing Jim Tseng, Los Altos CA; Norman Wang, Palo Alto CA; Mei Wu - James Wu, Fremont CA

MORNING COMPACT KNOCKOUT TEAMS CONSOLATION

Bracket 1 6 Teams

5.23 1 Leonard Beck, Fullerton CA; Scott Campbell, Sun City CA; Ann MacMillan, Las Vegas NV; James Griffin Jr, San Bernardino CA

3.92 2 Jay Mann, Fort Lauderdale FL; Don Campbell, Saskatoon SK; Waldemar Frukacz, Ottawa ON; Jarosleaw Cieslak, Paradzice PL

2.88 3 Maurice Emond, Allenstown NH; Ruth Horner, Sunapee NH; Mark Teich - Gretchen Teich, Concord NH

Bracket 2 8 Teams

4.14 1 Mary Lou Phipps, Aurora CO; Simon Farrer, Calgary AB; Laura Mooney, Red Deer AB; Laurah Limbrick, Denver CO

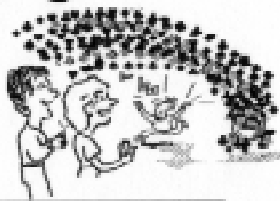
3.11 2 Wilhelmina Szabo - Lajos Szabo, Columbus OH; Deborah Golden, Hartsdale NY; Natalie Roberts, Bronx NY

2.28 3 Daisy Vandenberg - David Mitchell - Patsy Mitchell, New Orleans LA; Violet Bobo, Metairie LA



Easybridge!

CREATE new duplicate players!
 ATTRACT new members to your units and clubs!
 RETAIN your membership!



Visit the Easybridge! Table in the Pavilion. Freebies! Ideas for your club!

ACCREDITATION SCHEDULE

LOCATION:

Conference Rooms 4 & 5
Sunday, November 18
 Stage A - 9am to noon
 Stage B - 1:00 to 4:00 pm
Monday, November 19
 Stage A - 9am to noon
 Stage B - 1:00 to 4:00 pm
Tuesday, November 20
 Stage A - 9 am to noon
 Stage B - 1:00 to 4:00 pm

Friday, November 23

Stage A - 9 am to noon
 Stage B - 1:00 to 4:00 pm

Saturday, November 24

Stage A - 11 am to 1:30 pm
 Stage B - 2:00 to 5:00 pm

Sunday, November 25

Stage A - 9 am to noon
 Stage B - 1:00 to 4:00 pm

Monday, November 26

Stage A - 9 am - noon
 Stage B - 1:00 to 4:00 pm